

Wondfo

Wondfo POCT Qualitative Rapid Diagnostic Reagent

NEW POCT SOLUTION



WONDFO BIOTECH
WeAreWorkingForYour **Health**

Wondfo

Guangzhou Wondfo Biotech Co., Ltd.
No.8 Lizhishan Road, Science City, Huangpu District, 510663, Guangzhou, P.R.China
Tel: (+86) 400-830-8768 E-mail: sales@wondfo.com.cn
Website: en.wondfo.com



© 2024 Guangzhou Wondfo Biotech Co., Ltd.
All rights reserved Rev.A2 Rel.:2024/09/19

GUANGZHOU WONDFO BIOTECH CO., LTD.

ENTERPRISE INTRODUCTION



Guangzhou Wondfo Biotech Co., Ltd., headquartered in Guangzhou science city, has been focusing on the R&D, manufacturing, sales and service of Point-of-care testing (POCT) industry and providing professional rapid diagnosis and chronic disease management solutions since 1992.

Wondfo has developed 9 technology platforms, our rapid diagnostic devices and reagents cover a wide range, such as cardiovascular diseases, diabetes, renal functions, respiratory, fertility, DOA, infections, tumor etc. Over the years, with 3000+ employees worldwide, Wondfo products have been distributed to over 140 countries and regions.

01 Professional R&D Team

Wondfo has been consistently paying attention to R&D and regarding innovation as the core of its development. As a result, there are highly educated employees in the company. And it owns 5 well-equipped research laboratories all over the world.

02 Strong Production Capacity

With the international leading production lines and highly experienced staff, its daily production capacity reaches 1.5 million tests. Services are also tailored to professional distributors and partnering affiliates.

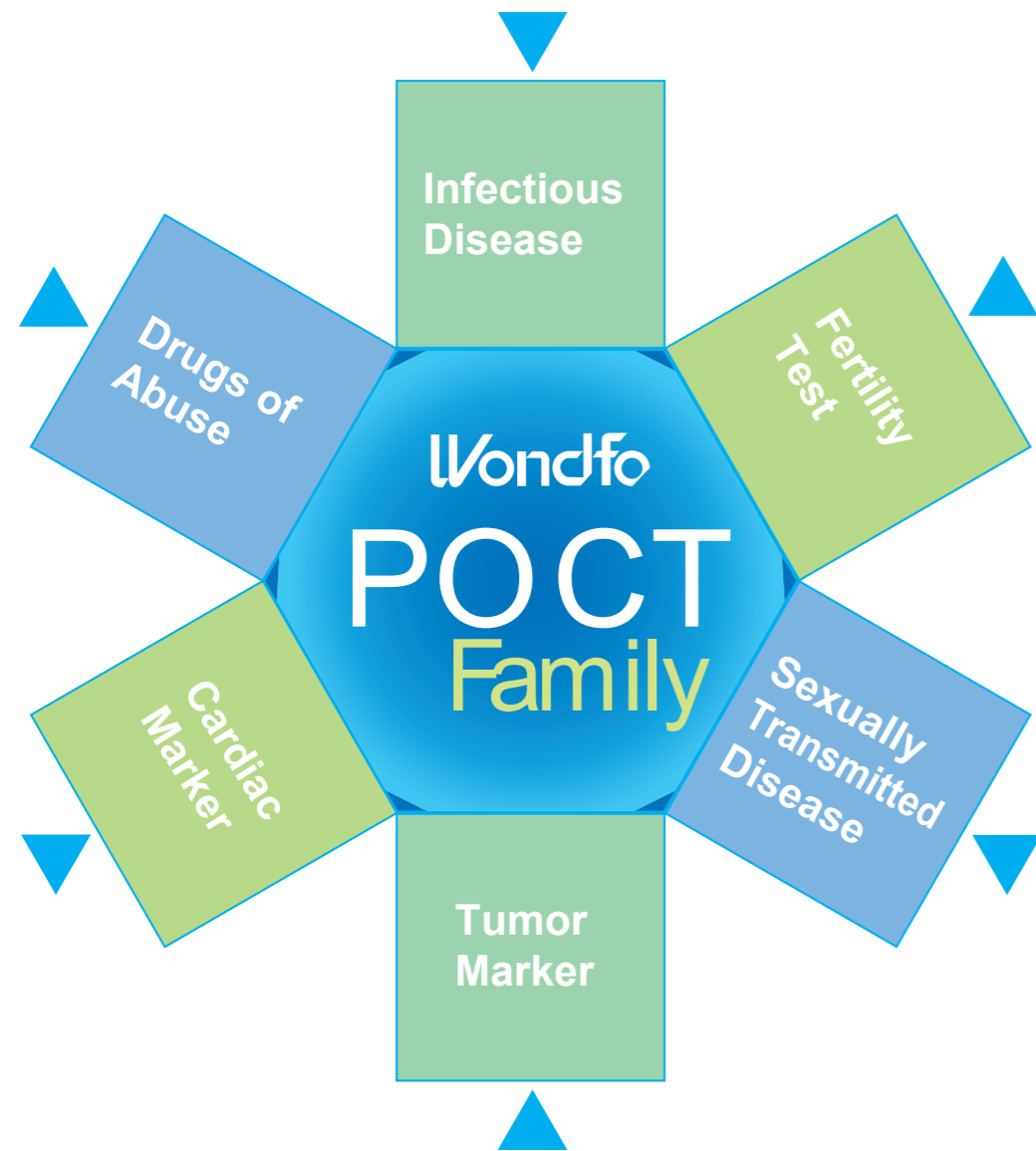
03 Integrated Services System

Serving more than 140 countries and regions, Wondfo provides an exciting opportunity to distribute quality products at a very competitive price. Every aspect of the company's operation is strictly measured, which provides customers with all-around technical support and counselling all the time.



Guangzhou Wondfo Biotech Co., Ltd.

PRODUCTS



CONTENTS

01 Fertility Series

HCG
LH
FSH
Sperm Concentration Test

03 Infectious Disease Series

Hepatitis
HIV
Malaria
Gastrointestinal Infection
Respiratory Infection
Dengue

11 STD (Sexually Transmitted disease)

Syphilis
Chlamydia
Gonorrhea

13 Tumor Marker Series

FOB Fecal Occult Blood Test
PSA Prostate Specific Antigen Test

15 Drugs of Abuse Series

DOA Tests
Multi-Drug Tests

17 Cardiac Marker Series

Troponin I

Fertility Tests



Product	Format	Cat. No.	Width	Specimen	Sensitivity	Qualification
HCG Test	Strip	W1-S	3.5mm	Urine	25mIU/mL	CE, CLIA WAIVED, NMPA
		W1-S(20mIU)	3.5mm	Urine	20mIU/mL	CE
		W1-S(10mIU)	3.5mm	Urine	10mIU/mL	CE, CLIA WAIVED, NMPA
		W001-S1HJ(20mIU)1	2.5mm	Urine	20mIU/mL	CE
	Cassette	W1-C	4.0mm	Urine	25mIU/mL	CE, CLIA WAIVED, NMPA
		W1-CI	3.5mm	Urine	20mIU/mL	CE
		W1-C(20mIU)	4.0mm	Urine	20mIU/mL	CE
		W1-CI(20mIU)	3.5mm	Urine	10mIU/mL	CE, CLIA WAIVED, NMPA
		W1-C(10mIU)	4.0mm	Urine	25mIU/mL	CE, CLIA WAIVED, NMPA
		W1-CI(10mIU)	3.5mm	Urine	25mIU/mL	CE, CLIA WAIVED, NMPA
	Midstream	W1-M	6.0mm	Urine		
		W1-MII	5.0mm	Urine		
		W1-MIII	6.0mm	Urine	25mIU/mL	CE, CLIA WAIVED, NMPA
		W1-M4	3.5mm	Urine		
		W1-M6	6.0mm	Urine		
		W1-M(20mIU)	6.0mm	Urine		
		W1-MII(20mIU)	5.0mm	Urine	20mIU/mL	CE
		W1-MIII(20mIU)	6.0mm	Urine		
		W1-M4(20mIU)	3.5mm	Urine		
		W1-M6(20mIU)	6.0mm	Urine		
W1-M(10mIU)		6.0mm	Urine	10mIU/mL	CE, CLIA WAIVED, NMPA	
W1-MII(10mIU)		5.0mm	Urine			
W1-MIII(10mIU)	6.0mm	Urine				
W1-M4(10mIU)	3.5mm	Urine				
W1-M6(10mIU)	6.0mm	Urine				
Strip	W1-S3P	3.5mm	Urine/ Serum	25mIU/mL	CE, CLIA WAIVED	
	W001P0720	3.5mm	Urine/ Serum			
Cassette	W1-C3P	4.0mm	Urine/ Serum	25mIU/mL	CE, CLIA WAIVED	
	W001P0721	4.0mm	Urine/ Serum			
LH Test	Strip	W2-S	3.5mm	Urine	25mIU/mL	CE, CLIA WAIVED, NMPA
		W2-C	4.0mm	Urine	25mIU/mL	CE, CLIA WAIVED, NMPA
	Cassette	W2-CI	3.5mm	Urine	25mIU/mL	CE, CLIA WAIVED, NMPA
		W2-M	6.0mm	Urine		
	Midstream	W2-MII	5.0mm	Urine	25mIU/mL	CE, CLIA WAIVED, NMPA
		W2-M4	3.5mm	Urine		
W2-M6	6.0mm	Urine				
FSH Test	Strip	W52-S	3.5mm	Urine	25mIU/mL	CE, NMPA
	Cassette	W52-C	4.0mm	Urine	25mIU/mL	CE, NMPA
	Midstream	W52-M	6.0mm	Urine	25mIU/mL	CE, NMPA
Sperm Concentration Test	Cassette	W121-C	4.0mm	Semen	15×10 ⁶ /mL	CE, NMPA

Parameters

Name	One Step HCG Urine Test	One Step Ovulation Urine Test
Format	Strip / Cassette / Midstream	
Specimen	Urine	
Sensitivity	25 mIU/mL, 20 mIU/mL, 10 mIU/mL	25mIU/mL
Test time	3minutes	5 minutes
Storage temperature	4~30°C	
Shelf life	36 months	

Test Procedure & Interpretation

Strip

HCG

Do not allow the urine level to exceed the MAX line.

3 seconds

Immerse the strip into the specimen with the arrow pointing towards the urine.

Lay the strip flat on a clean, dry, non-absorbent surface.

3min

Positive Negative Invalid

LH

Do not allow the urine level to exceed the MAX line.

3 seconds

Immerse the strip into the specimen with the arrow pointing towards the urine.

Lay the strip flat on a clean, dry, non-absorbent surface.

5min

Positive Negative Invalid

Cassette/ Midstream

HCG

Add 4 drops of urine to the sample well

10 seconds OR 3 seconds

3min

Positive Negative Invalid

LH

Add 4 drops of urine to the sample well

10 seconds OR 3 seconds

5min

Positive Negative Invalid

Infectious Disease Series

★ One Step HBsAg Whole Blood/Serum/Plasma Test

Wondfo One Step HBsAg Whole Blood/Serum/Plasma Test is a rapid immunochromatographic test for the visual detection of hepatitis B surface antigen (HBsAg) in whole blood/serum/plasma samples.



Product name	Format	Pack Size	Catalog No.
One Step HBsAg Whole Blood/Serum/Plasma Test	Cassette	25 Tests/kit	W003-C
	Cassette	40 Tests/kit	W003P0100
	Strip	50 Tests/kit	W003-S
	Strip	100 Tests/kit	W003P0099

Parameters

Specimen	Whole blood / Serum / Plasma
Time to result	10~15 minutes
Shelf life	24 months
Storage temperature	4~30°C
Performance	Sensitivity 96.2%, Specificity 99.3%

Test Procedure & Interpretation

For Whole Blood Testing

add 3~4 drops (about 80~100 μL)

add 1 drop of buffer solution

15 mins

Control line → C Test line → T

Positive Negative

For Serum/Plasma Testing

add 3~4 drops (about 80~100 μL)

Invalid Invalid

Infectious Disease Series

★ One Step Hepatitis C Virus Whole Blood/Serum/Plasma Test

Wondfo One Step Hepatitis C Virus Whole Blood/Serum/Plasma Test is a rapid immunochromatographic test for visual detection of hepatitis C antibodies in whole blood/serum/plasma samples in the diagnosis of hepatitis C virus infection.

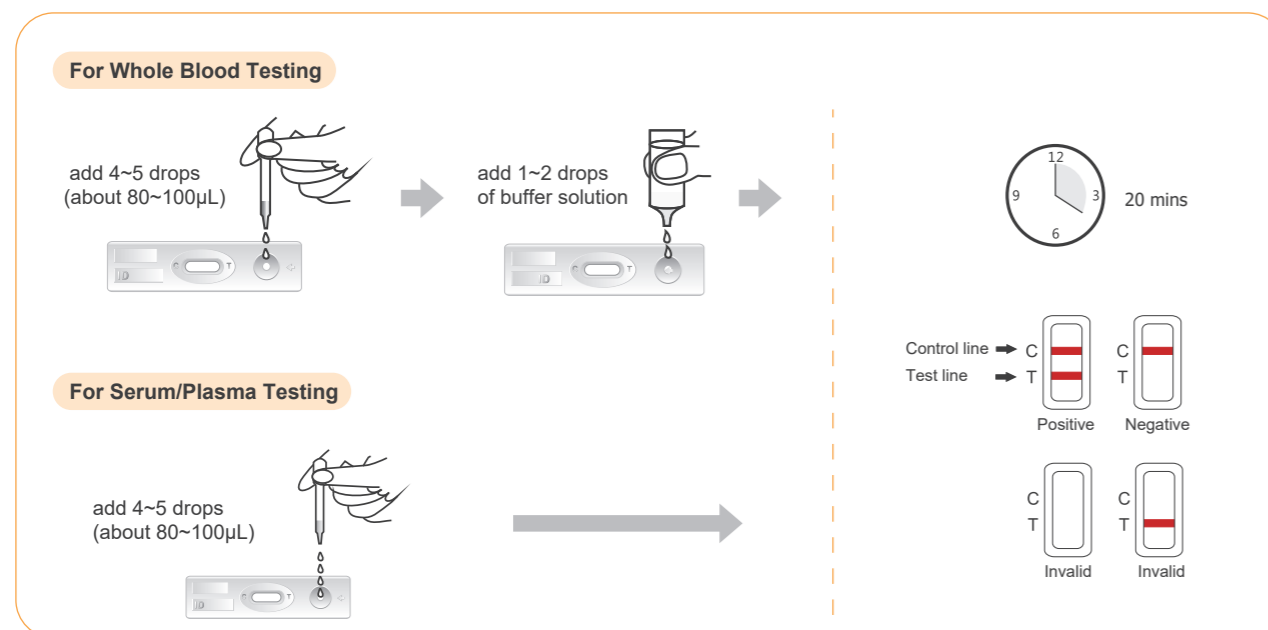


Product name	Format	Pack Size	Catalog No.
One Step Hepatitis C Virus Whole Blood/Serum/Plasma Test	Cassette	25 Tests/kit	W005-C
	Cassette	40 Tests/kit	W005P0075
	Strip	50 Tests/kit	W005-S
	Strip	100 Tests/kit	W005P0074

Parameters

Specimen	Whole blood / Serum / Plasma
Time to result	20 minutes
Shelf life	24 months
Storage temperature	4~30°C
Performance	Sensitivity 96.67%, Specificity 97.51%

Test Procedure & Interpretation



Infectious Disease Series

★ One Step HIV 1/2 Whole Blood/Serum/Plasma Test

Wondfo One Step HIV1/2 Whole Blood/Serum/Plasma Test is a rapid immunochromatographic direct binding test for the qualitative detection of HIV1/2 antibodies in human venous whole blood, fingerstick whole blood, serum or plasma as an aid in the diagnosis of HIV infection.



★ HIV Self-Test

The Wondfo HIV Self-Test is a single-use in vitro diagnostic self-test for fingerstick whole blood detection of HIV-1/2. The test adopts double antigen sandwich immunochromatography method.

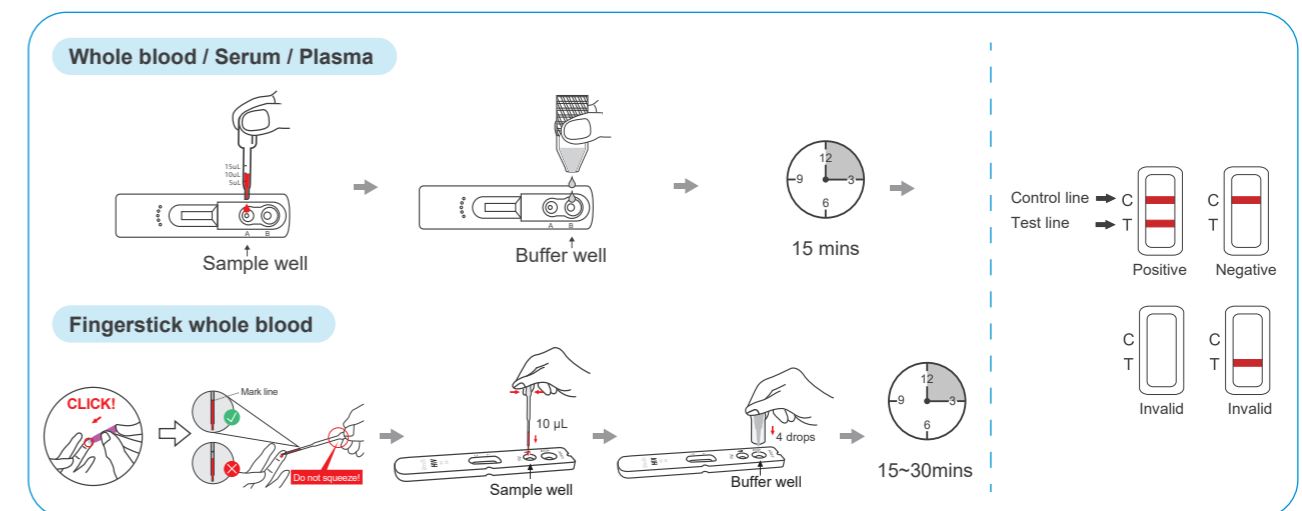


Product name	Format	Pack Size	Catalog No.	Qualification
One Step HIV 1/2 Whole Blood/Serum/Plasma Test	Cassette	25 Tests/kit	W752-C4G3-E	CE 0123
	Cassette	40 Tests/kit	W752-C4G3-F	
	Cassette	25 Tests/kit	W006-C	NMPA
	Strip	50 Tests/kit	W006-S	
HIV Self-Test	Cassette	25/40 Test/kit	W006-C4P2 (verified)	WHO Pre-qualified
	Cassette	1 Test/kit	W006P0058	WHO Pre-qualified
	Cassette	20 Tests/kit	W006P0059	
	Cassette	100 Tests/kit	W006P0060	

Parameters

Specimen	Whole blood / Serum / Plasma	Fingerstick whole blood
Time to result	15 minutes	15 minutes
Shelf life	24 months	24 months
Storage temperature	2~30°C	2~30°C
Performance	Sensitivity 100%, Specificity 99.96%	Sensitivity 95.8%, Specificity 99.6%

Test Procedure & Interpretation



Infectious Disease Series

★ Wondfo Dengue Rapid Test

Wondfo Dengue Rapid Test is an immunochromatographic assay designed for the qualitative detection of dengue NS1 antigen and IgG/IgM antibodies in human whole blood, serum or plasma as an aid in the diagnosis of dengue infection.

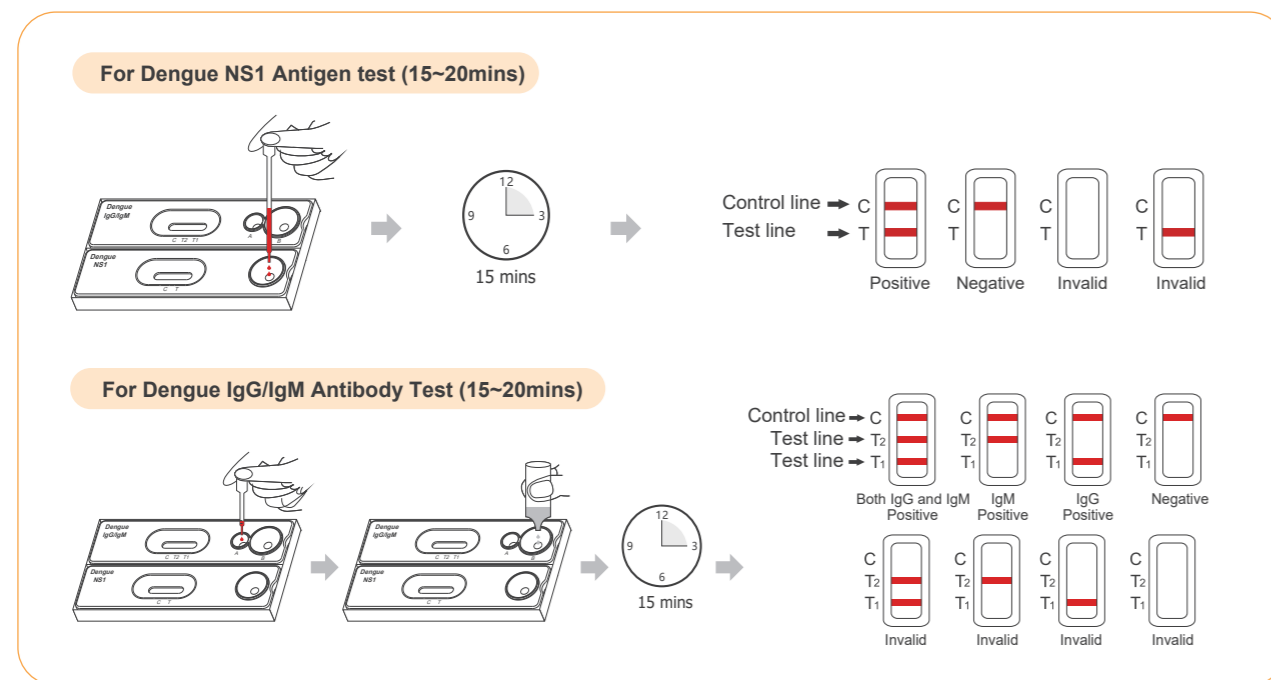


Product name	Format	Pack Size	Catalog No.	Qualification
One Step Dengue NS1 Antigen Whole Blood/Serum/Plasma Test	Cassette	25 Tests/kit	W041-C	CE
		40 Tests/kit	W041P0007	
One Step Dengue IgG/IgM Whole Blood/Serum/Plasma Test		25 Tests/kit	W109-C	
		40 Tests/kit	W109P0010	
Combined Diagnostic Kit for Dengue NS1 Antigen and IgG/IgM Antibody(Colloidal Gold)	25 Tests/kit	W111-C		
	40 Tests/kit	W111P0005		

Parameters

Specimen	Whole blood / Serum / Plasma
Time to result	15~20 minutes
Shelf life	24 months
Storage temperature	4~30°C
Performance	Sensitivity 92.22%, Specificity 100% for Dengue NS1 Ag; Sensitivity 97.30%, Specificity 98.18% for Dengue IgG/IgM Ab

Test Procedure & Interpretation



Infectious Disease Series

★ Wondfo Malaria Rapid Test

Wondfo Malaria Rapid Test is designed as a rapid qualitative, two site sandwich immunoassay utilizing whole blood for the detection of *P.falciparum* specific histidine rich protein-2 (P.fHRP-2) and specific pLDH.

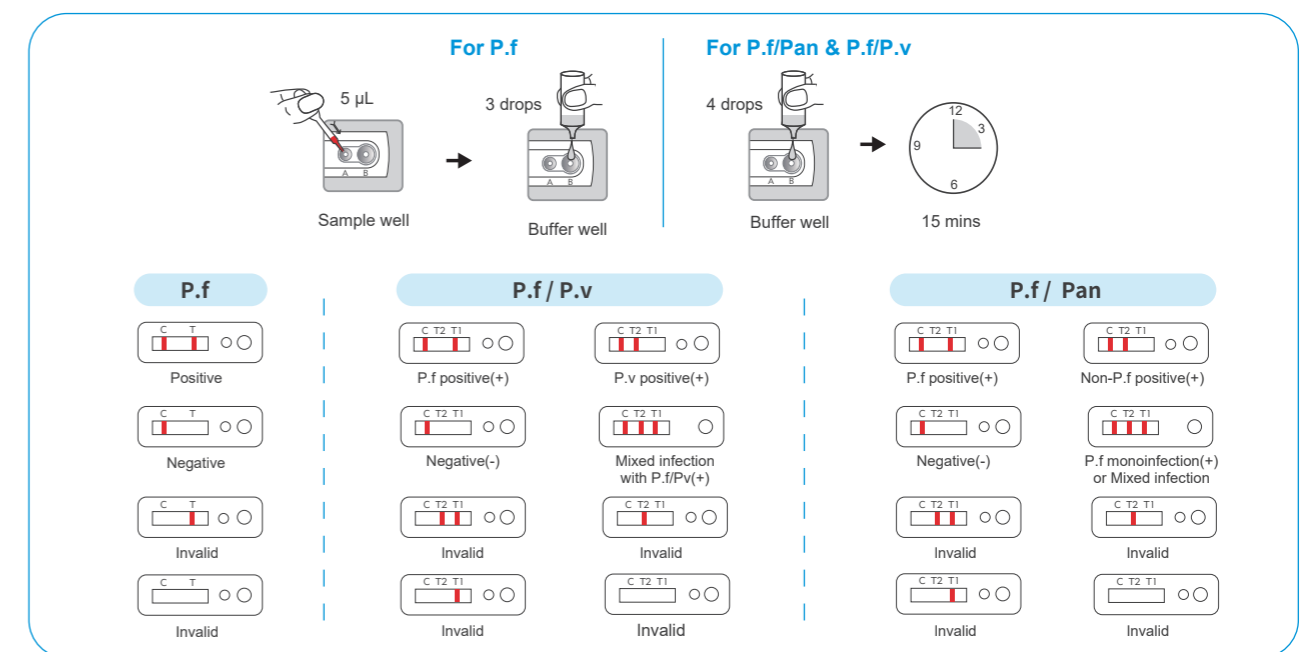


Product name	Format	Pack Size	Catalog No.	Qualification
One Step Malaria HRP2 (P.f) Test	Cassette	25 Tests/kit	W37-C	CE
		40 Tests/kit	W037P0040	
One Step Malaria HRP2/pLDH (P.f/P.v) Test		25 Tests/kit	W056-C	
		40 Tests/kit	W056P0025	
One Step Malaria HRP2/pLDH (P.f/Pan) Test	25 Tests/kit	W62-C		
	25 Tests/kit	W054P0016		
		40 Tests/kit	W054P0017	

Parameters

Specimen	Venous Whole Blood / Fingertick Whole Blood
Time to result	15 minutes
Shelf life	24 months
Storage temperature	2~35°C
Performance	Sensitivity: (1) P. f: 98.11% ; (2) Non-P. f (P.v, P.m, P.o): 96.84% ; (3) Mix-infection: 100% ; (4) Malaria: 97.44% Specificity: 98.83%

Test Procedure & Interpretation



Infectious Disease Series

★ One Step Influenza A&B Test

Wondfo One Step Influenza A&B Test is intended for use by healthcare professionals and as qualitative screening in vitro diagnostic test for detection of influenza type A (including the subtype H1N1) and B nucleoprotein antigens extracted from the nasal swab specimen. These devices are used to aid in the differential diagnosis of influenza type A and B infection. This test is not automated and does not require any additional instrument.

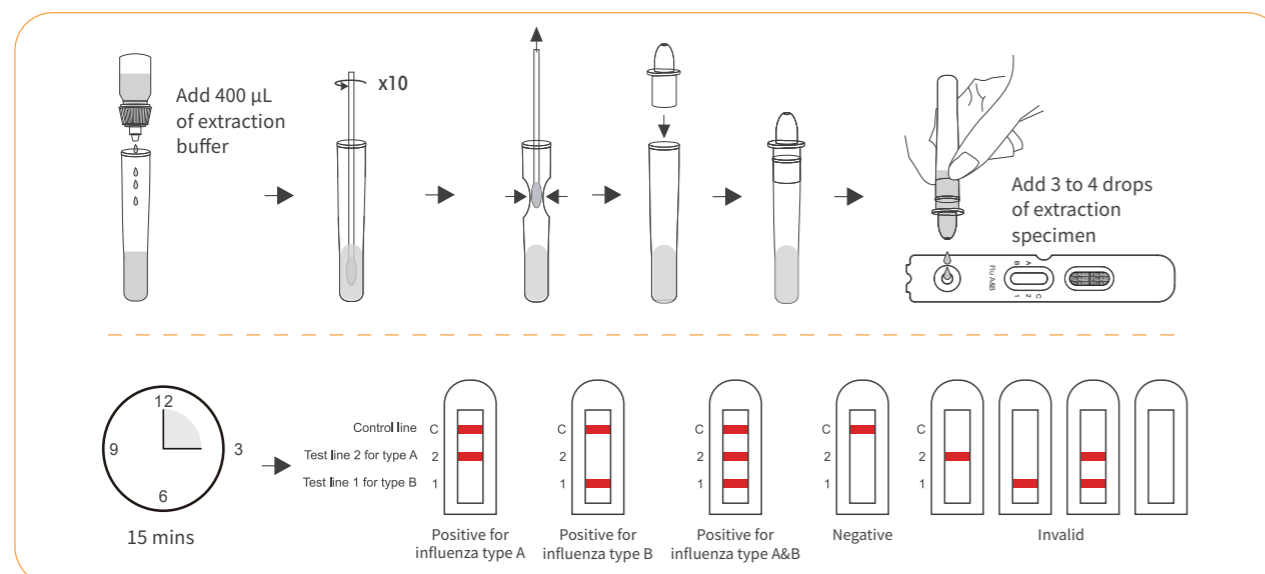


Product name	Intended Use	Pack Size	Catalog No.	Qualification
One Step Influenza A&B Test	Professional	20 Tests/kit	W059P0010	CE
	Professional	25 Tests/kit	W059P0011	CE
	Professional	40 Tests/kit	W059P0012	CE
	Professional	25 Tests/kit	W71-C	CE
	Self-Test	1 Test/kit	W71-CH	CE 0123

Parameters

Specimen	Nasal Swab for professional use ; Nasal Swab / Throat Swab for self-test
Time to result	15~20 minutes
Shelf life	24 months
Storage temperature	4~30°C
Performance	Sensitivity 90.7%, Specificity 95.1% for Influenza A; Sensitivity 91.5%, Specificity 92.2% for Influenza B

Test Procedure & Interpretation



Infectious Disease Series

★ One Step Strep A Swab Test

Wondfo One Step Strep A Swab Test is a rapid chromatographic immunoassay intended for use by healthcare professionals and as qualitative screening in vitro diagnostic test for detection of group A streptococcal antigen from throat swab specimens.

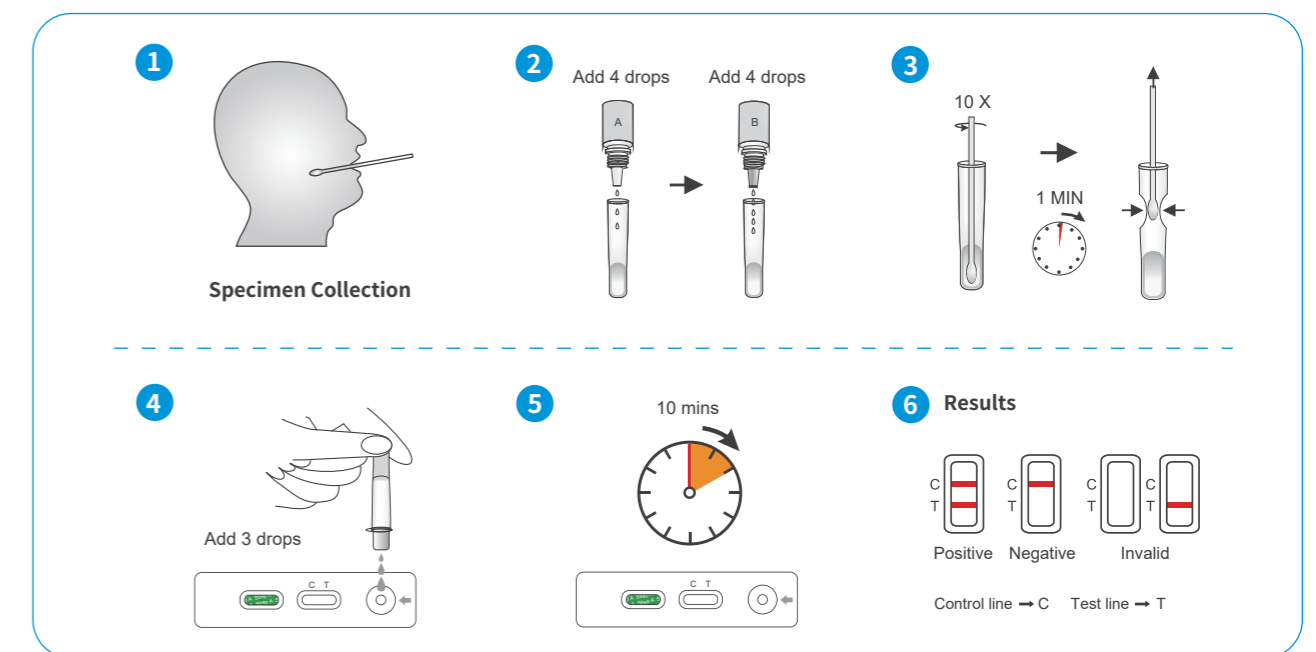


Product name	Item Code	Intended Use	Controls	Package Size	Qualification
One Step Strep A Swab Test	W39-C	Professional	✓	25 Tests/kit	CE
	W039P0003	Professional	✓	40 Tests/kit	CE
	W039P0001	Self-Test		1 Test/kit	CE 0123
	W39-CH	Self-Test		2 Tests/kit	CE 0123

Parameters

Specimen	Swab
Time to result	10 minutes
Shelf life	24 months
Storage temperature	4~30°C
Performance	Sensitivity 97.22%, Specificity 98.86% for Professional use; Sensitivity 96.6%, Specificity 98.9% for Self-test

Test Procedure & Interpretation



Infectious Disease Series

Rapid Test kit

Principle: Colloidal gold immunochromatographic method

Application: Single test and suitable for professional use

Advantage: Easy to use, easy to read result, easy to carry;
High sensitivity and specificity, safe and reliable



Category	Cat. No.	Test Item	Specimen	Format	Sensitivity	Qualification
Hepatitis	W003	HBsAg	WB/S/P	Cassette/Strip	5.0 IU/mL	NMPA
	W004	HBsAb	WB/S/P	Cassette/Strip	30 mIU/mL	NMPA
	W040-P	HBV(HBsAg, HBsAb,HBeAg, HBeAb, HBcAb)	WB/S/P	Panel	/	NMPA
	W005	HCV	WB/S/P	Cassette/Strip	2 NCU/mL	NMPA
	W071	HAV-IgM	S/P	Cassette	/	CE
HIV	W752	HIV 1/2 (2 lines)	WB/S/P	Cassette	/	CE, NMPA
	W006	HIV 1/2 (2 lines)	WB/S/P	Cassette/Strip	/	NMPA
	W006-P	HIV 1/2 (2 lines)	WB/S/P	Cassette	/	WHO Pre-qualified; NMPA
	W006P00XX(58-60)	HIV 1/2 (2 lines) (Self-Test)	Fingerstick WB	Cassette	/	WHO Pre-qualified
	W050-C	HIV 1/2 (3 lines)	WB/S/P	Cassette	/	
	W063-C	HIV 1/2 Oral Mucosal Transudate	Oral Mucosal Transudate	Cassette	/	NMPA
	W026-C	HIV-HCV-HBsAg-Syphilis	WB/S/P	Cassette	/	NMPA
Malaria	W094-C	HIV-HCV-HBsAg	WB/S/P	Cassette	/	NMPA
	W037	Malaria HRP2 (P.f)	WB	Cassette/Strip	100 pμL	CE, NMPA
	W054	Malaria HRP2/pLDH (P.f/Pan)	WB	Cassette	100 pμL	CE, NMPA
Gastrointestinal Infection	W056	Malaria HRP2/pLDH (P.f/P.v)	WB	Cassette	100 pμL	CE
	W028	H. Pylori Antigen	Feces	Cassette/Strip	/	CE
	W038	H. Pylori Antibody	S/P	Cassette/Strip	/	CE
	W133	ADV	Feces	Cassette	/	CE, NMPA
	W112	RV	Feces	Cassette	/	CE, NMPA
	W134	ADV-RV	Feces	Cassette	/	CE, NMPA
	W141	EV71	WB/S/P	Cassette	/	CE, NMPA
	W158	EV 71-CA16 IgM	WB/S/P	Cassette	/	CE
	W187	Norovirus Ag	Feces	Cassette	/	CE, NMPA
	Respiratory Infection	W771	Flu A&B/2019-nCoV/RSV/ADV/MP	Nasopharyngeal Swab/ Oropharyngeal Swab	Cassette	/
W770		Flu A&B/2019-nCoV/RSV/ADV	Nasopharyngeal Swab/ Oropharyngeal Swab	Cassette	/	CE
W769		Flu A&B/RSV/ADV/MP	Nasopharyngeal Swab/ Oropharyngeal Swab	Cassette	/	CE
W766		RSV/ADV/MP	Nasopharyngeal Swab/ Oropharyngeal Swab	Cassette	/	CE
W773		RSV Ag	Nasopharyngeal Swab/ Oropharyngeal Swab	Cassette	/	CE
W774		ADV Ag	Nasopharyngeal Swab/ Oropharyngeal Swab	Cassette	/	CE
W772		MP Ag	Nasopharyngeal Swab/ Oropharyngeal Swab	Cassette	/	CE
W059		Flu A&B	Nasal Swab	Cassette	Flu A: 5.1x10 ⁵ TCID ₅₀ /mL Flu B: 1.5x10 ⁶ TCID ₅₀ /mL	CE, NMPA
W71-CH		Flu A&B (Self-Test)	Nasal Swab/ Throat Swab	Cassette	Flu A: 5.1x10 ⁵ TCID ₅₀ /mL Flu B: 1.5x10 ⁶ TCID ₅₀ /mL	CE, CLIA WAIVED
Dengue		W039	Strep A	Swab	Cassette	1.5x10 ⁵ CFU/mL
	W039	Strep A (Self-Test)	Swab	Cassette	1.5x10 ⁵ CFU/mL	CE
	W113	MP IgM	WB/S/P	Cassette	/	CE, NMPA
	W135	CP IgM	WB/S/P	Cassette	/	CE, NMPA
	W041	Dengue NS1 Antigen	WB/S/P	Cassette	/	CE, NMPA
	W109	Dengue IgG/IgM Antibody	WB/S/P	Cassette	/	CE, NMPA
	W111	Dengue NS1/IgG/IgM	WB/S/P	Cassette	/	CE, NMPA

Sexually Transmitted Disease Series

One Step Syphilis Whole Blood/Serum/Plasma Test

Wondfo One Step Syphilis Whole Blood/Serum/Plasma Test is a rapid test for the visual detection of antibodies of Treponema Pallidum (TP) as an aid in the diagnosis of syphilis infection.

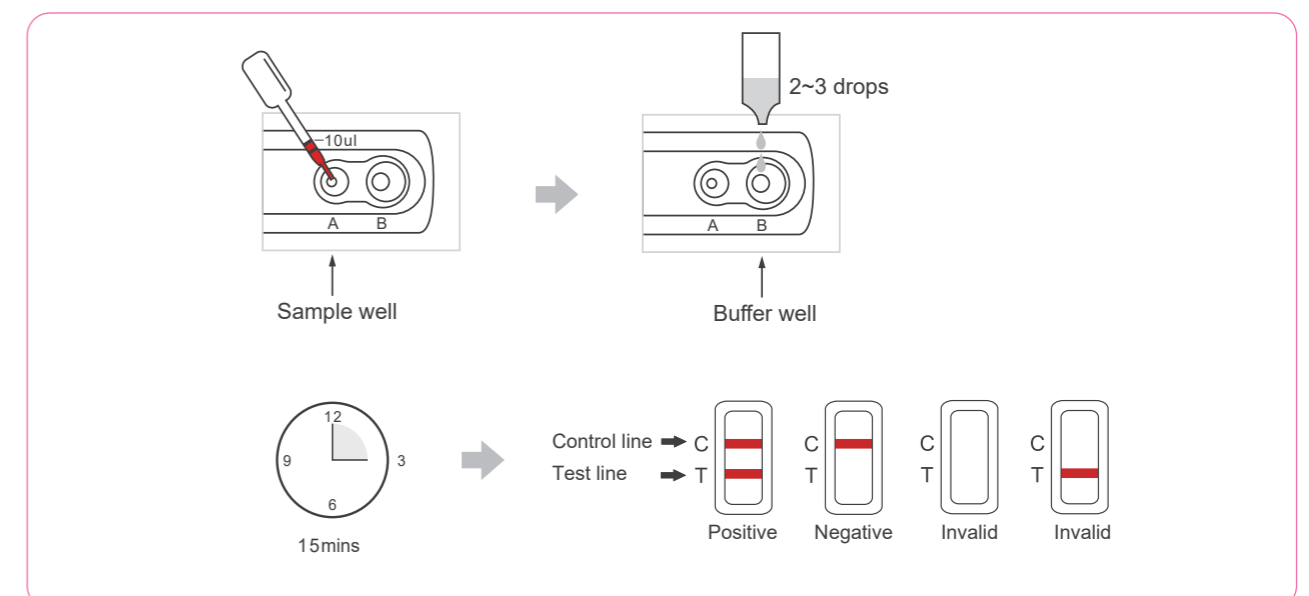


Product name	Format	Pack Size	Catalog No.	Qualification
One Step Syphilis Whole Blood/Serum/Plasma Test	Cassette	25 Tests/kit	W34-C4P	CE
	Cassette	40 Tests/kit	W034P0071	
	Strip	25 Tests/kit	W34-S4P	
	Strip	50 Tests/kit	W034P0070	

Parameters

Specimen	Whole blood / Serum / Plasma
Time to result	15 minutes
Shelf life	24 months
Storage temperature	4~30°C
Performance	Sensitivity 100%, Specificity 98%

Test Procedure & Interpretation



Sexually Transmitted Disease Series

Cat. No.	Test Item	Specimen	Format	Sensitivity	Qualification
W35-C	Chlamydia	Female Endocervical Swab/ Male Penile Swab/Male Urine	Cassette	5×10 ⁴ IFU/mL	CE ; NMPA 0123
W036	Gonorrhea	Female Endocervical Swab/ Male Penile Swab	Cassette	1×10 ⁵ CFU/mL	CE ; NMPA

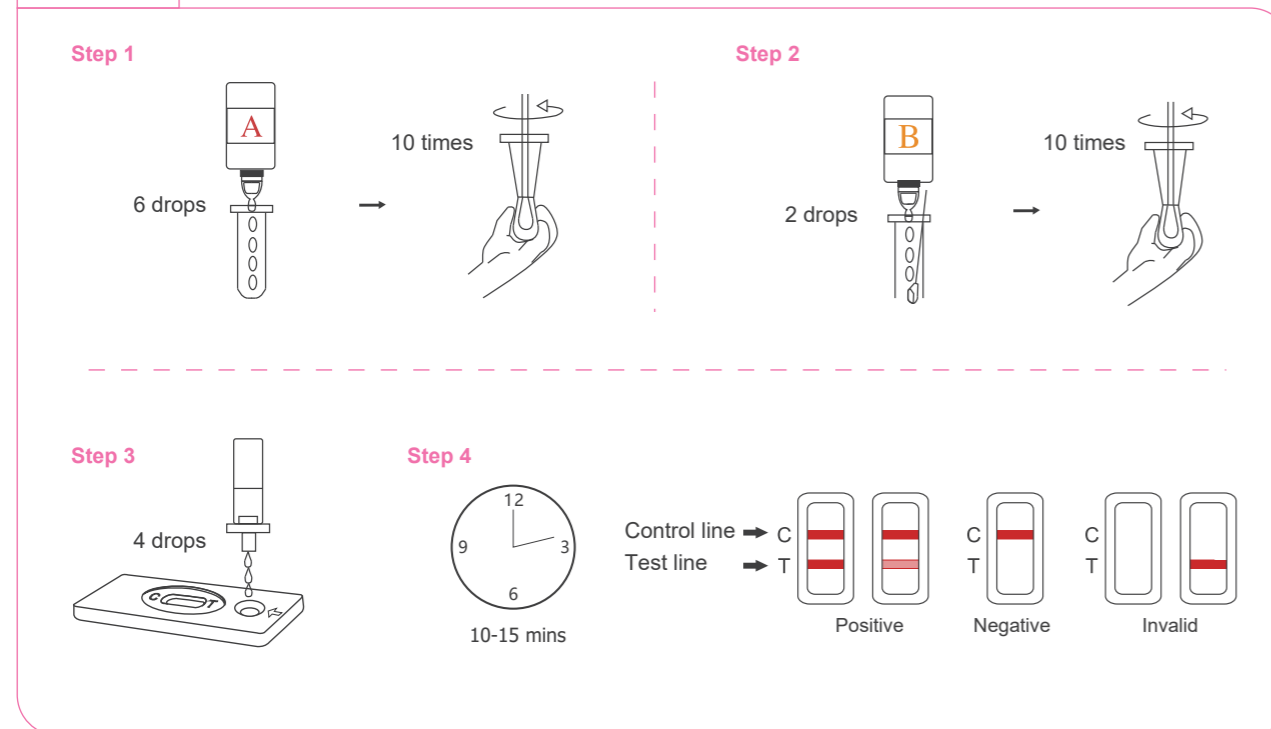
Parameters

Product name	One Step Gonorrhea Swab Test
Test time	10~15 mins
Storage temperature	4~30°C
Shelf life	24 months



Test Procedure & Interpretation

Gonorrhea

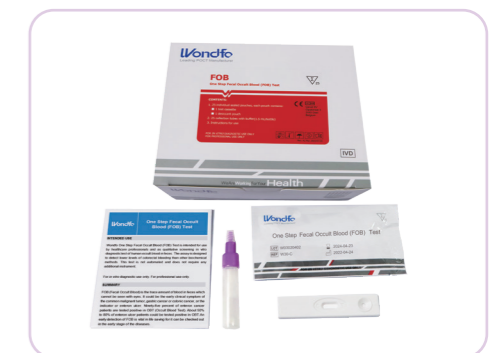


Tumor Marker Series

Cat. No.	Test Item	Specimen	Format	Sensitivity	Qualification
W030	FOB	Feces	Cassette/Strip	200 ng/mL	CE ; NMPA
W030	FOB (Self-Test)	Feces	Cassette/Strip	50ng/mL	CE ; CLIA WAIVED 0123
W31-C	PSA	S/P	Cassette	/	CE 0123

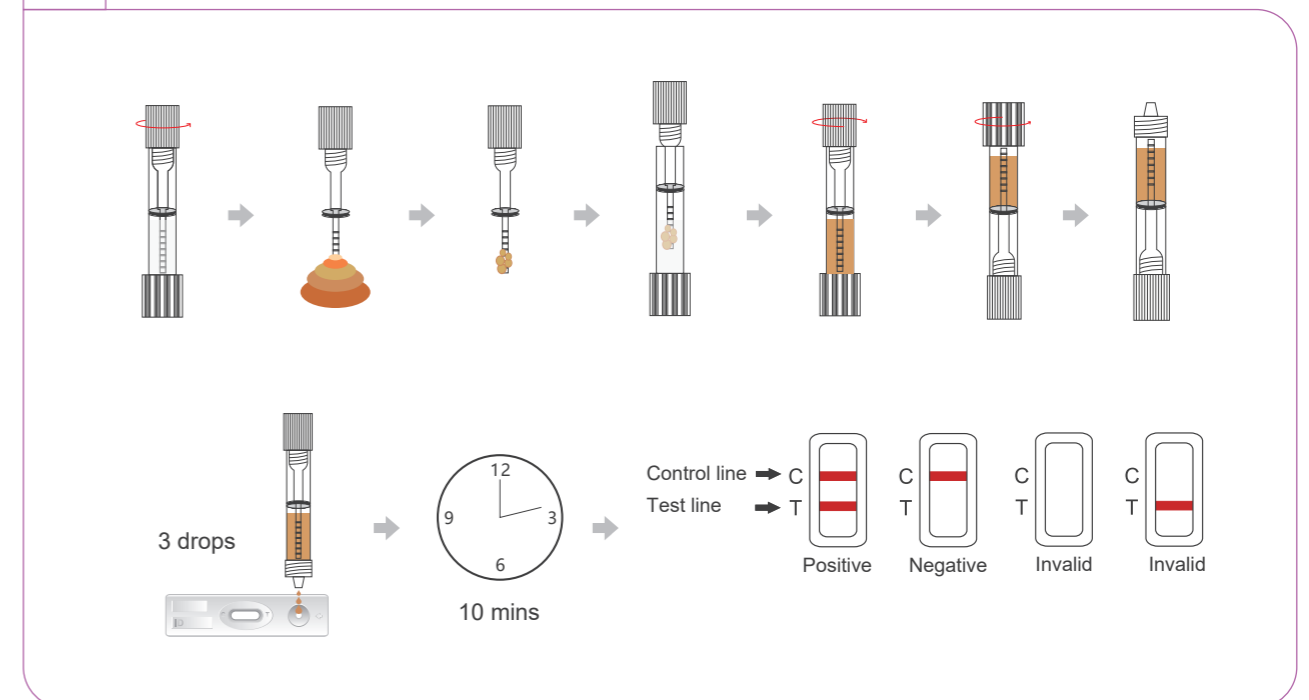
Parameters

Product name	One Step Fecal Occult Blood (FOB) Test
Test time	10-15 mins
Storage temperature	4-30°C
Shelf life	24 months



Test Procedure & Interpretation

FOB





Parameters

Product name	One Step PSA Serum/Plasma Test
Test time	10-15 mins
Storage temperature	4-30°C
Shelf life	24 months

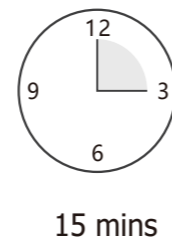
Test Procedure & Interpretation

PSA

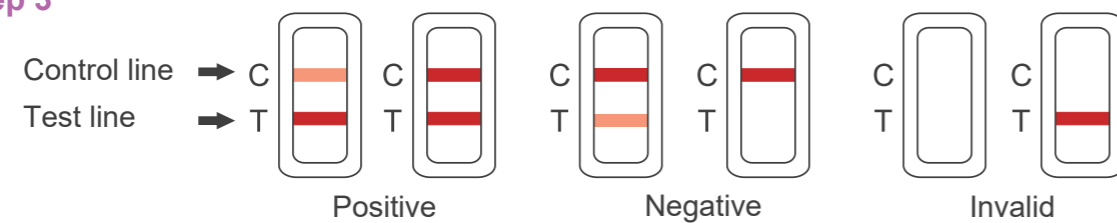
Step 1



Step 2



Step 3



Drug of Abuse Series

★ DOA Test Menu

Unit: ng/mL

Drug	Abbreviation	Urine - Regular			Urine - Special				Oral Fluid			
		CE	CLIA Waived	Forensic Use	CE	CLIA Waived	510 (k) Cleared	Forensic Use	CE	E&I (Employment & Insurance)	Forensic Regular	Forensic Special
Amphetamine	AMP	1000	1000		500	500	300		50	50	50	40
Barbiturates	BAR	300	300						60	20	60	
Benzodiazepines	BZO	300	300				200	100 ◆	30		30	
Buprenorphine	BUP	10	10					5	5		5	
Cocaine	COC	300	300		150	150	100		20	20	20	
Cotinine	COT	100		200			200 ★★★					
2-ethylidene-1,5-dimethyl-3,3-diphenylpyrrolidine	EDDP	100	300					300	20		20	
Ethyl Glucuronide	EtG	500		500								
Fentanyl	FTY ★★★	20		20					30			
Ketamine	KET	1000						1000			100	150
Marijuana	THC	50 ★	50 ★		25 ★		40 ★	25 ★	25 ★	40 ★★★	25 ★	
Methadone	MTD	300	300				200		30	30	30	
Methamphetamine	MET/mAMP	1000	1000			500	300 ◆		50	50	50	
Methylenedioxy-methamphetamine	MDMA	500	500						100	50	100	
Monoacetylmorphine	6-MAM			10								
Morphine	MOP	300	300				100					
Opiate	OPI	2000	2000						40	40	40	15
Oxycodone	OXY	100	100						20	20	20	
Phencyclidine	PCP	25	25						10	10	10	
Propoxyphene	PPX	300	300									
Synthetic Cannabinoid	K2	50		50								5
Tramadol	TRA	1000		200					100&1000 ◆			
Tricyclic Antidepressants	TCA	1000	1000									

Adulteration Parameters: Creatinine (CR), Glutaraldehyde (GL), Specific Gravity (S.G.), pH, Oxidant (OX) & Nitrite (NI)

★ 11-nor-Δ9-THC-9-COOH

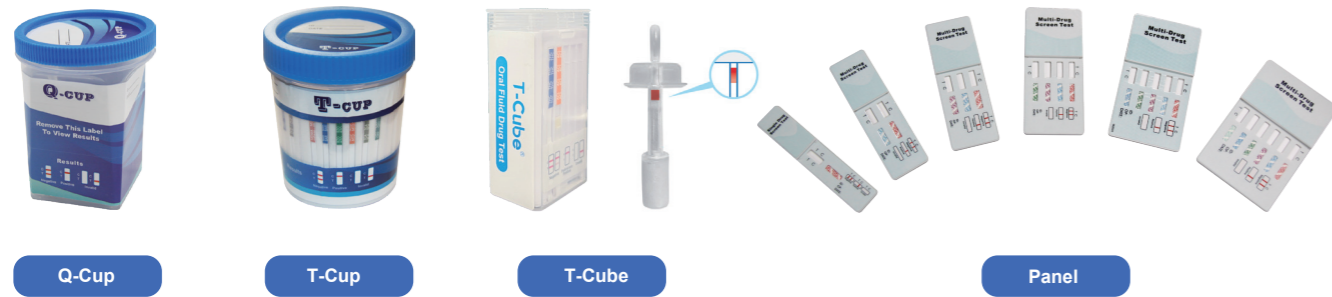
★★ Δ9-THC

★★★ Class I Exempt; Prescription Use Only

★★★★ Norfentanyl

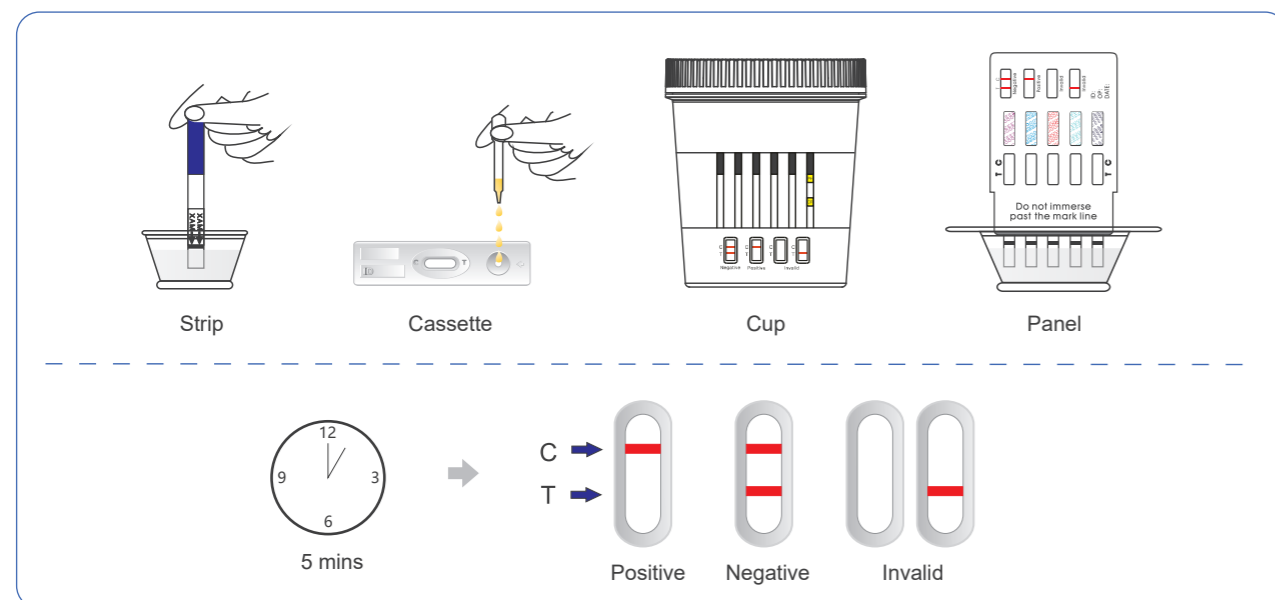
◆ Please consult with Wondfo team before ordering

★ Multi-Drug Tests



Product	Cat. No.	Format	Test items	Specimen	Sensitivity	Qualification
Multi-Drug Urine Test	W20XX(2-16)-P	Panel	2-16 Items	Urine	Variable	CE ; CLIA WAIVED
	W5XX(2-18)-CU2	T-Cup	2-18 Items	Urine	Variable	CE ; CLIA WAIVED
	W5XX(2-18)-CU3	Q-Cup	2-18 Items	Urine	Variable	CE
Multi-Drug Oral Fluid	W6XX(2-10)-CU6	T-Cube	2-10 Items	Oral Fluid	Variable	CE
	W605P-W606P	Swab	5-6 Items	Oral Fluid	Variable	CE
	W602P-W612P	T-Square	2-12 Items	Oral Fluid	Variable	CE
Multi-Drug Hair Test	W5XX(62-72)P0001	T-Cube	2-12 Items	Hair	Variable	CE
Marijuana (THC) Multi-Level Urine Drug Test	W775P0001	Panel	THC15/50/100/200/300	Urine	Variable	CE
Marijuana(THC) Hair Test	W628P0001	T-Cube	THC100/200	Hair	Variable	CE

Test Procedure & Interpretation



Cardiac Marker Series

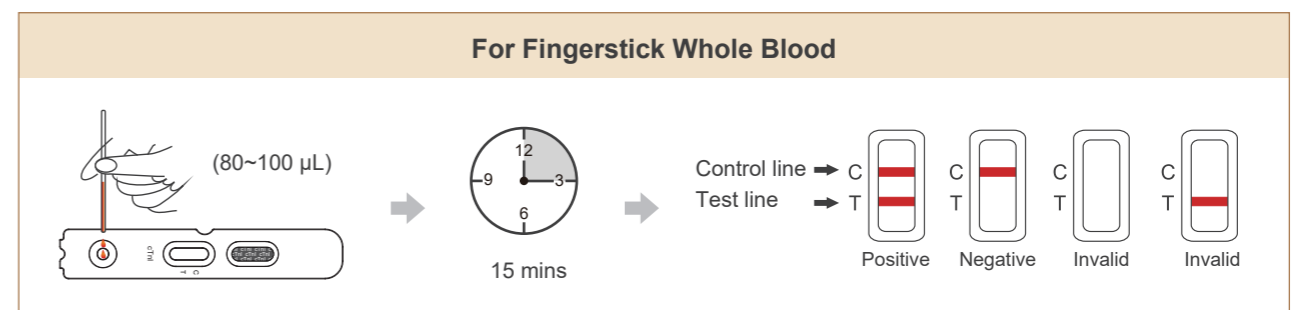
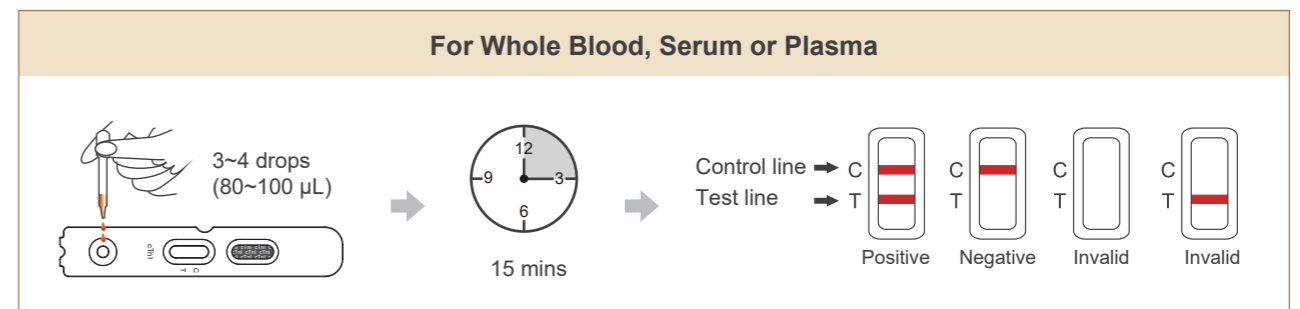
Product	Cat. No.	Format	Test items	Sensitivity	Qualification
Troponin I	W046	Cassette	WB/S/P	1 ng/mL	CE ; NMPA

Parameters

Product name	One Step Troponin I Whole Blood/Serum/Plasma Test
Test time	15 mins
Storage temperature	4~30°C
Shelf life	24 months



Test Procedure & Interpretation





Vision

We're dedicated to providing professional products and services for rapid diagnosis and chronic disease management; we are always in the pursuit of a friendly and convenient user experience; we strive to enhance people's wellbeing and fulfill the shared dream of our staffs, customers, and partners.

Mission

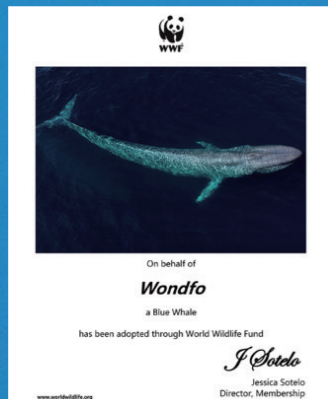
We're specialized in providing professional healthcare products and services, and we sincerely safeguard people's life and wellbeing.

Core Values

We strive to achieve goals with full passion to meet every customer's needs; we respect every employee and give them opportunities to constantly improve themselves; we dare to dream and act to bring success to every partner. We pursue excellence to safeguard everyone's health.

WONDFO MASCOT – FOFO

Where there is a whale, there is a way.



To raise awareness of protecting environment and blue whales.