



2025

PRODUCT CATALOG

Racing for Life

Wondfo

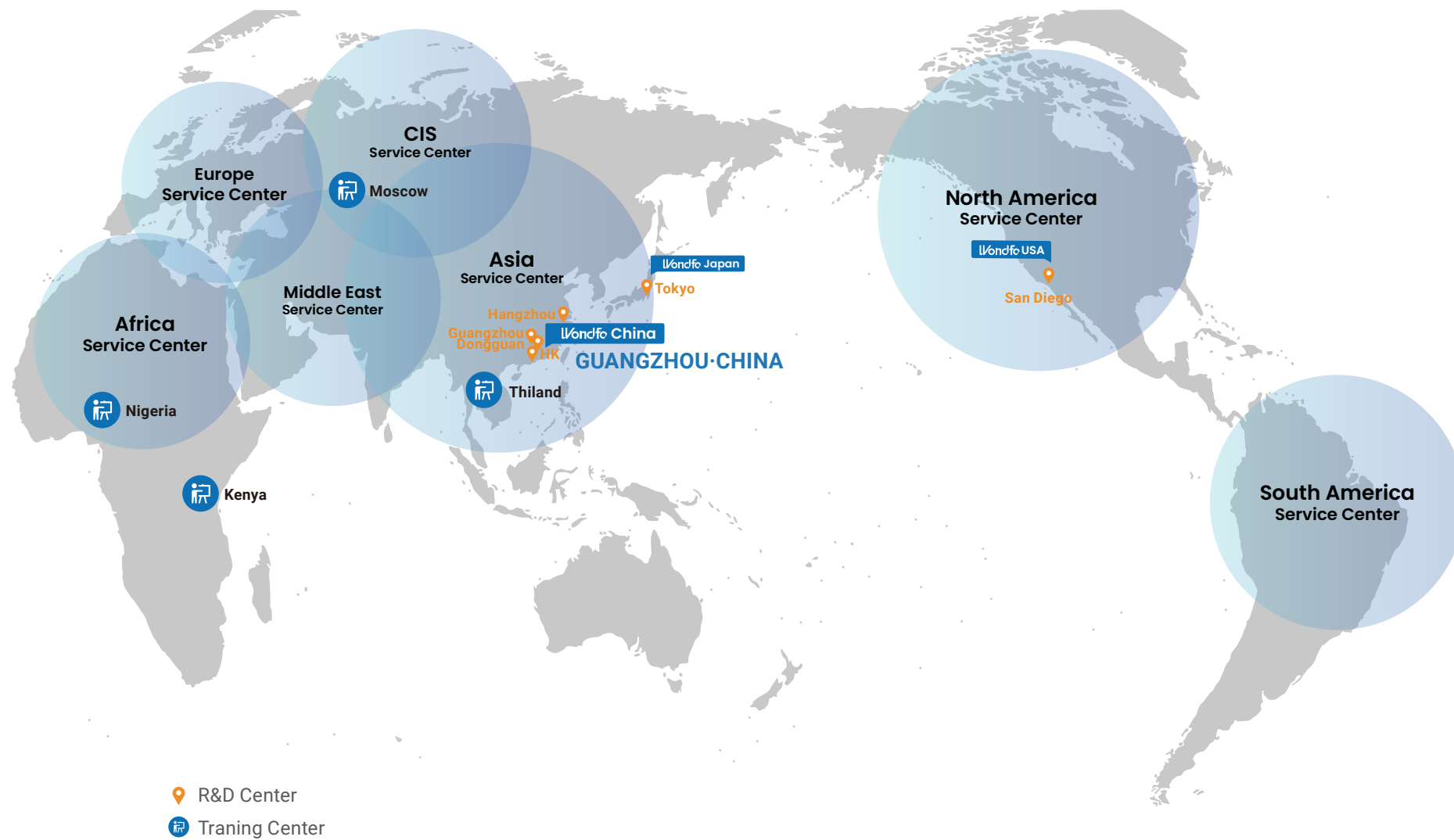
Guangzhou Wondfo Biotech Co., Ltd.
No. 8 Lizhishan Road, Science City, Huangpu District,
510700, Guangzhou, P.R. China
Tel: (+86) 400-830-8768
E-mail: sales@wondfo.com.cn
Website: en.wondfo.com



© 2024 Guangzhou Wondfo Biotech Co., Ltd.
Rev. A1 Rel.: 2024/11/1 All rights reserved

Wondfo

Guangzhou Wondfo Biotech Co., Ltd.



PROFILE

Founded in 1992, headquartered in Guangzhou science city, Wondfo focuses on the R&D, manufacturing, sales and service of IVD (In Vitro diagnostics) industry, providing professional rapid diagnosis and chronic disease management solutions.

Wondfo has 9 technology platforms. Our rapid diagnostic devices and reagents span a wide spectrum, including cardiovascular diseases, diabetes, renal functions, respiratory issues, fertility, DOA, infections, tumor etc. We provide service to over 150 countries and regions.

In 2015, Wondfo was listed on Shenzhen Stock Exchange, becoming the first public company in POCT in China.



6
R&D Centers

Guangzhou, Hangzhou, Dongguan, HK
San Diego, Tokyo

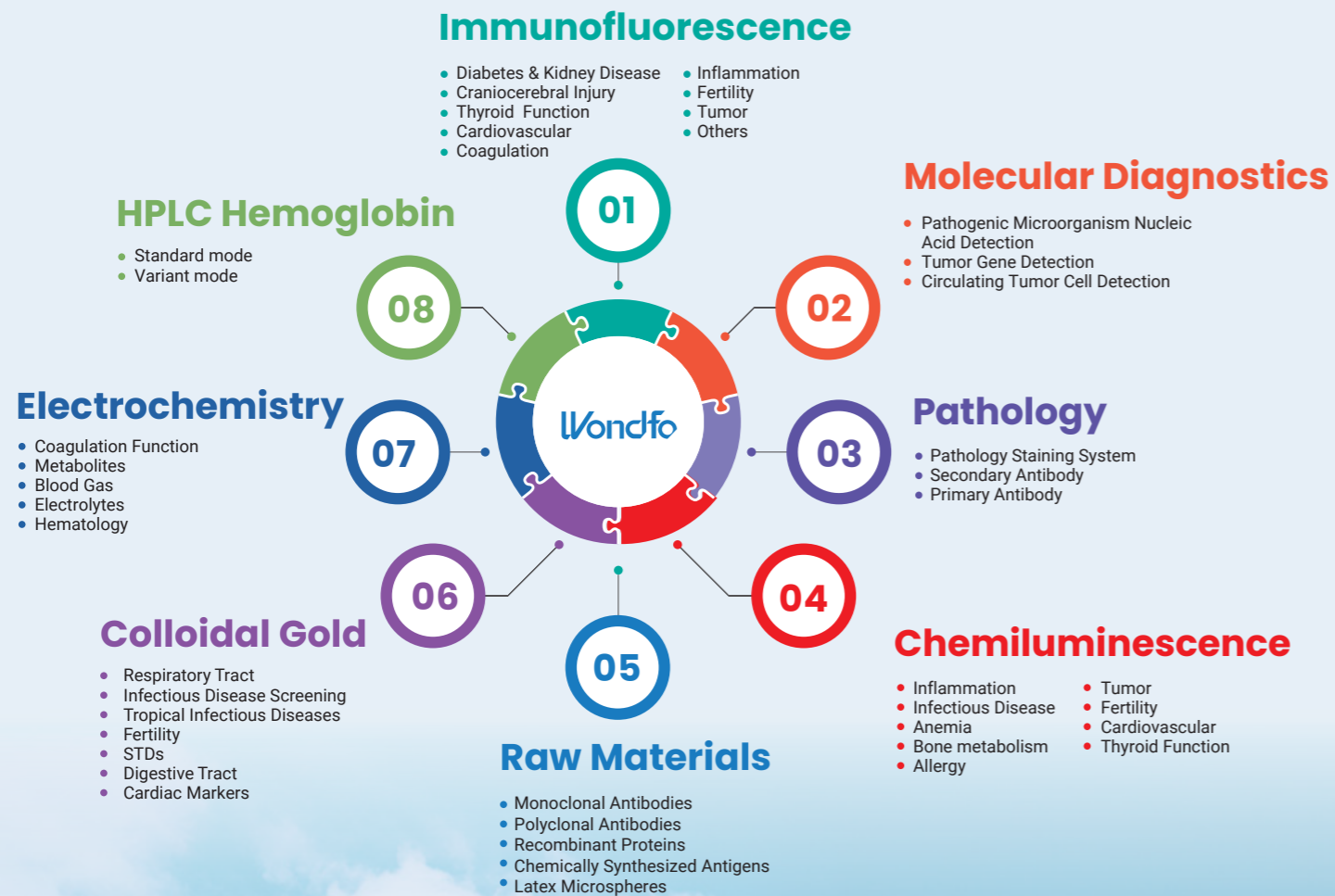


30+
Years in POCT



3000+
Employees

Wondfo Product Portfolio



8 Major Fields



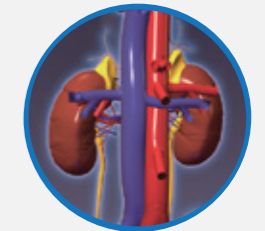
Cardiovascular



Diabetes



Respiratory



Renal Injury



Fertility



DOA



Infection



Tumor



Trademark

610+
Registered Trademarks



Patent

450+
Valid Patents



Certificate

300+ NMPA
240+ CE
70+ CLIA WAIVED
15 MDALL
3 WHO PQ



CONTENTS

Qualitative Rapid Diagnostic Family 01

Fertility Tests 01

HCG Pregnancy Test
LH Ovulation Test
FSH Urine Test
Sperm Concentration Test

Infectious Disease Tests 02

HBsAg Hepatitis B Surface Antigen Test
HBsAb Hepatitis B Surface Antibody Test
HBV Hepatitis B Virus Test
HCV Hepatitis C Virus Test
HAV Hepatitis A Virus Test
HIV 1/2 Test (2 lines)
HIV 1/2 Test (3 Lines)
HIV 1/2 Oral Mucosal Transudate Test
HIV-HCV-HBsAg-Syphilis Test
HIV-HCV-HBsAg Test
Syphilis Test
Chlamydia Test
Gonorrhea Test
Malaria P.f Test
Malaria P.f/Pan Test
Malaria P.f/P.v Test
Flu A&B Test
Strep A Test
MP IgM Antibody Test
CP IgM Antibody Test
2019-nCoV Antigen Test
Influenza/2019-nCoV Antigen Combo Test
Flu A&B/2019-nCoV/RSV/ADV/MP Antigen Combo Test
Flu A&B/2019-nCoV/RSV/ADV Antigen Combo Test
Flu A&B/RSV/ADV/MP Antigen Combo Test
RSV/ADV/MP Antigen Combo Test
Respiratory Syncytial Virus Antigen Test
Adenovirus Antigen Test
Mycoplasma Pneumoniae Antigen Test
H. pylori Antigen Test
H. pylori Antibody Test
Adenovirus Antigen Test
Rotavirus Antigen Test
Combined Adenovirus Antigen and Rotavirus Antigen Test
EV71 IgM Antibody Test
Dengue NS1 Antigen Test
Dengue IgG/IgM Antibody Test
Combined Dengue NS1 Antigen and Dengue IgG/IgM Antibody Test
Monkeypox Virus Antigen Test

Tumor Marker Tests 03

PSA Prostate Specific Antigen Test
FOB Fecal Occult Blood Test

Other Rapid Tests 03

Troponin I Test

Drug of Abuse Tests 04

Multi-Drug Tests
DOA Tests (Urine)
DOA Tests (Oral Fluid)

Quantitative Detection Family 06

Electrochemistry Platform 06

Optical Coagulation Analyzer (OCG-102)
Thrombelastography Analyzer (TLT-101)
Blood Gas Analyzer (BGA-102)
Automatic Blood Gas Analyzer (Ucare-6000)

Immunofluorescence Platform 10

Finecare™ Platform 10

Finecare™ FIA Meter Plus (FS-113)
Finecare™ FIA Meter II Plus SE (FS-114)
Finecare™ FIA Meter III Plus (FS-205)
Finecare™ FIA Meter Automatic (FS-301)

New Finecare™ Platform 14

Finecare™ FIA Meter X1 (FS-1000)
Finecare™ FIA Meter X2 (FS-2000)
Finecare™ FIA Meter X2 Plus (FS-2100)

Mono-test Chemiluminescence Platform 16

ACCRES 8
ACCRES 90
ACCRES 120

Fully-auto Chemiluminescence Platform 21

SmarLumi™ FC-2100

Molecular Diagnostics Platform 23

WonDx™ Automated Rapid Molecular Diagnostic System
U-Card Dx™ Molecular Diagnostic System
Real-Time PCR Assay Test Menu

Immunohistochemistry Platform 26

PA-3600 Fully Automated IHC Staining Instrument

HPLC Hemoglobin Platform 29

HPLC Hemoglobin Analyzer



Qualitative Rapid Diagnostic Family



Fertility Tests



Sperm Concentration Test Kit



Pregnancy & Ovulation tests

- Other colors of Midstream caps are available.
- Reliable original equipment manufacturer, high-quality service is provided.

Product	Cat. No.	Specimen	Width	Format	Sensitivity	Qualification
HCG Test	W1-S	Urine	3.5mm	Strip	25mIU/mL	CE, CLIA WAIVED, NMPA
	W1-S(20mIU)	Urine	3.5mm	Strip	20mIU/mL	CE
	W1-S(10mIU)	Urine	3.5mm	Strip	10mIU/mL	CE, CLIA WAIVED, NMPA
	W001-S1HJ(20mIU)1	Urine	2.5mm	Strip	20mIU/mL	CE
	W1-C	Urine	4.0mm	Cassette	25mIU/mL	CE, CLIA WAIVED, NMPA
	W1-CI	Urine	3.5mm	Cassette	20mIU/mL	CE
	W1-C(20mIU)	Urine	4.0mm	Cassette	20mIU/mL	CE
	W1-CI(20mIU)	Urine	3.5mm	Cassette	10mIU/mL	CE, CLIA WAIVED, NMPA
	W1-C(10mIU)	Urine	3.5mm	Cassette	25mIU/mL	CE, CLIA WAIVED, NMPA
	W1-M	Urine	6.0mm	Midstream	25mIU/mL	CE, CLIA WAIVED, NMPA
LH Test	W1-MII	Urine	5.0mm	Midstream	25mIU/mL	CE, CLIA WAIVED, NMPA
	W1-MIII	Urine	6.0mm	Midstream	20mIU/mL	CE
	W1-M4	Urine	3.5mm	Midstream	10mIU/mL	CE, CLIA WAIVED, NMPA
	W1-M6	Urine	6.0mm	Midstream	25mIU/mL	CE, CLIA WAIVED
	W1-M(20mIU)	Urine	6.0mm	Midstream	25mIU/mL	CE, CLIA WAIVED
	W1-MII(20mIU)	Urine	5.0mm	Midstream	25mIU/mL	CE, CLIA WAIVED, NMPA
	W1-MIII(20mIU)	Urine	6.0mm	Midstream	25mIU/mL	CE, CLIA WAIVED, NMPA
	W1-M4(20mIU)	Urine	6.0mm	Midstream	25mIU/mL	CE, CLIA WAIVED, NMPA
	W1-M6(20mIU)	Urine	6.0mm	Midstream	25mIU/mL	CE, CLIA WAIVED, NMPA
	W1-M(10mIU)	Urine	5.0mm	Midstream	25mIU/mL	CE, CLIA WAIVED, NMPA
FSH Test	W1-MIII(10mIU)	Urine	6.0mm	Midstream	25mIU/mL	CE, CLIA WAIVED, NMPA
	W1-M4(10mIU)	Urine	3.5mm	Midstream	25mIU/mL	CE, CLIA WAIVED, NMPA
	W1-M6(10mIU)	Urine	6.0mm	Midstream	25mIU/mL	CE, CLIA WAIVED, NMPA
	W1-S3P	Urine/ Serum	3.5mm	Strip	25mIU/mL	CE, CLIA WAIVED
	W001P0720	Urine/ Serum	3.5mm	Strip	25mIU/mL	CE, CLIA WAIVED
	W1-C3P	Urine/ Serum	4.0mm	Cassette	25mIU/mL	CE, CLIA WAIVED
Sperm Concentration Test	W001P0721	Urine/ Serum	4.0mm	Cassette	25mIU/mL	CE, CLIA WAIVED, NMPA
	W2-S	Urine	3.5mm	Strip	25mIU/mL	CE, CLIA WAIVED, NMPA
	W2-C	Urine	4.0mm	Cassette	25mIU/mL	CE, CLIA WAIVED, NMPA
	W2-CI	Urine	3.5mm	Cassette	25mIU/mL	CE, CLIA WAIVED, NMPA
	W2-M	Urine	6.0mm	Midstream	25mIU/mL	CE, CLIA WAIVED, NMPA
	W2-MII	Urine	5.0mm	Midstream	25mIU/mL	CE, CLIA WAIVED, NMPA
	W2-M4	Urine	3.5mm	Midstream	25mIU/mL	CE, CLIA WAIVED, NMPA
Sperm Concentration Test	W2-M6	Urine	6.0mm	Midstream	25mIU/mL	CE, CLIA WAIVED, NMPA
	W52-S	Urine	3.5mm	Strip	25mIU/mL	CE, NMPA
	W52-C	Urine	4.0mm	Cassette	25mIU/mL	CE, NMPA
Sperm Concentration Test	W52-M	Urine	6.0mm	Midstream	25mIU/mL	CE, NMPA
	W121-C	Semen	4.0mm	Cassette	15x10 ⁶ /mL	CE, NMPA

Infectious Disease Tests

Category	Cat. No.	Test Item	Specimen	Format	Sensitivity	Qualification
Hepatitis	W003	HBsAg	WB/S/P	Cassette/Strip	5.0 IU/mL	NMPA
	W004	HBsAb	WB/S/P	Cassette/Strip	30 mIU/mL	NMPA
	W040-P	HBV(HBsAg, HBsAb, HBeAg, HBeAb, HBcAb)	WB/S/P	Panel	/	NMPA
	W005	HCV	WB/S/P	Cassette/Strip	2 NCU/mL	NMPA
	W071	HAV-IgM	S/P	Cassette	/	CE
HIV	W752	HIV 1/2 (2 lines)	WB/S/P	Cassette	/	CE, NMPA
	W006	HIV 1/2 (2 lines)	WB/S/P	Cassette/Strip	/	NMPA
	W006-P	HIV 1/2 (2 lines)	WB/S/P	Cassette	/	WHO Pre-qualified; NMPA
	W006P00XX (58-60)	HIV 1/2 (2 lines) (Self-Test)	Fingerstick WB	Cassette	/	WHO Pre-qualified; NMPA
	W050-C	HIV 1/2 (3 lines)	WB/S/P	Cassette	/	
	W063-C	HIV 1/2 Oral Mucosal Transudate	Oral Mucosal Transudate	Cassette	/	NMPA
STD	W026-C	HIV-HCV-HBsAg-Syphilis	WB/S/P	Cassette	/	NMPA
	W094-C	HIV-HCV-HBsAg	WB/S/P	Cassette	/	NMPA
	W034	Syphilis	WB/S/P	Cassette/Strip	2 NCU/mL	CE; NMPA
	W35-C	Chlamydia	Female Endocervical Swab/ Male Penile Swab/Male Urine	Cassette	5x10 ⁴ IFU/mL	CE; NMPA
Malaria	W036	Gonorrhea	Female Endocervical Swab/ Male Penile Swab	Cassette	1x10 ⁵ CFU/mL	CE; NMPA
	W037	Malaria HRP2 (P.f)	WB	Cassette/Strip	100 p/μL	CE; NMPA
	W054	Malaria HRP2/pLDH (P.f/Pan)	WB	Cassette	100 p/μL	CE; NMPA
Respiratory Infection	W056	Malaria HRP2/pLDH (P.f/P.v)	WB	Cassette	100 p/μL	CE
	W059	Flu A&B	Nasal Swab	Cassette	Flu A: 5.1x10 ⁵ TCID ₅₀ /mL Flu B: 1.5x10 ⁶ TCID ₅₀ /mL	CE; NMPA
	W059	Flu A&B	Nasal Swab/ Throat Swab	Cassette	Flu A: 5.1x10 ⁵ TCID ₅₀ /mL Flu B: 1.5x10 ⁶ TCID ₅₀ /mL	CE; NMPA
	W71-CH	Flu A&B (Self-Test)	Nasal Swab/ Throat Swab	Cassette	Flu A: 5.1x10 ⁵ TCID ₅₀ /mL Flu B: 1.5x10 ⁶ TCID ₅₀ /mL	CE; NMPA
	W039	Strep A	Swab	Cassette	1.5x10 ⁵ CFU/mL	CE; CLIA WAIVED
	W039	Strep A (Self-Test)	Swab	Cassette	1.5x10 ⁵ CFU/mL	CE
	W113	MP IgM	WB/S/P	Cassette	/	CE; NMPA
	W135	CP IgM	WB/S/P	Cassette	/	CE; NMPA
	W196	2019-nCoV	Nasopharyngeal Swab/ Oropharyngeal Swab	Cassette	1.1x10 ² TCID ₅₀ /mL	CE
	W634	2019-nCoV (Self-Test)	Nasal swab	Cassette	5.0x10 ³ TCID ₅₀ /mL	CE
Respiratory Infection	W630	Influenza /2019-nCoV	Nasopharyngeal Swab	Cassette	2019-nCoV: 1.1x10 ² TCID ₅₀ /mL Flu A: 1.25x10 ³ TCID ₅₀ /L Flu B: 1.0x10 ⁴ TCID ₅₀ /L	CE
	W771	Flu A&B/2019-nCoV/RSV/ADV/MP	Nasopharyngeal Swab/ Oropharyngeal Swab	Cassette	/	CE
	W770	Flu A&B/2019-nCoV/RSV/ADV	Nasopharyngeal Swab/ Oropharyngeal Swab	Cassette	/	CE
	W769	Flu A&B/RSV/ADV/MP	Nasopharyngeal Swab/ Oropharyngeal Swab	Cassette	/	CE
	W766	RSV/ADV/MP	Nasopharyngeal Swab/ Oropharyngeal Swab	Cassette	/	CE
	W773	RSV Ag	Nasopharyngeal Swab/ Oropharyngeal Swab	Cassette	/	CE
	W774	ADV Ag	Nasopharyngeal Swab/ Oropharyngeal Swab	Cassette	/	CE
	W772	MP Ag	Nasopharyngeal Swab/ Oropharyngeal Swab	Cassette	/	CE

Qualitative Rapid Diagnostic Family

Category	Cat. No.	Test Item	Specimen	Format	Sensitivity	Qualification
Enteric Infection	W028	H. Pylori Antigen	Feces	Cassette/Strip	/	CE; NMPA
	W038	H. Pylori Antibody	S/P	Cassette/Strip	/	CE
	W133	ADV	Feces	Cassette	/	CE; NMPA
	W112	RV	Feces	Cassette	/	CE; NMPA
	W134	ADV-RV	Feces	Cassette	/	CE; NMPA
	W141	EV71	WB/S/P	Cassette	/	CE; NMPA
	W158	EV 71-CA16 IgM	WB/S/P	Cassette	/	CE; NMPA
	W187	Norovirus Ag	Feces	Cassette	/	CE
Dengue	W041	Dengue NS1 Antigen	WB/S/P	Cassette	/	CE; NMPA
	W109	Dengue IgG/IgM Antibody	WB/S/P	Cassette	/	CE; NMPA
	W111	Dengue NS1/IgG/IgM	WB/S/P	Cassette	/	CE; NMPA
Monkeypox Virus	WL04	Monkeypox Virus	Lesion swab specimens	Cassette	/	CE

Tumor Marker Tests

Cat. No.	Test Item	Specimen	Format	Sensitivity	Qualification
W030	FOB	Feces	Cassette/Strip	200 ng/mL	CE; NMPA
W030	FOB (Self-Test)	Feces	Cassette/Strip	50ng/mL	CE ₀₁₂₃ ; CLIA WAIVED
W31-C	PSA	S/P	Cassette	/	CE ₀₁₂₃

Other Rapid Tests

Cat. No.	Product	Format	Specimen	Sensitivity	Qualification
W046	Troponin I	Cassette	WB/S/P	1 ng/mL	CE; NMPA

Drug of Abuse (DOA)



Cassette



Strip



Panel



T-Cup



Q-Cup



T-Cube

Multi-Drug Tests

Product	Cat. No.	Format	Test items	Specimen	Sensitivity	Qualification
Multi-Drug Urine Test	W20XX(2-16)-P	Panel	2-16 Items	Urine	Variable	CE; CLIA WAIVED
	W5XX(2-18)-CU2	T-Cup	2-18 Items	Urine	Variable	CE; CLIA WAIVED
	W5XX(2-18)-CU3	Q-Cup	2-18 Items	Urine	Variable	CE
Multi-Drug Oral Fluid	W6XX(2-10)-CU6	T-Cube	2-10 Items	Oral Fluid	Variable	CE
	W605P-W606P	T-Swab	5-6 Items	Oral Fluid	Variable	CE
	W602P-W612P	T-Square	2-12 Items	Oral Fluid	Variable	CE
Multi-Drug Hair Test	W5XX(62-72)P0001	T-Cube	2-12 Items	Hair	Variable	CE
Marijuana (THC) Multi-Level Urine Drug Test	W775P0001	Panel	THC15/50/100/200/300	Urine	Variable	CE
Marijuana(THC) Hair Test	W628P0001	T-Cube	THC100/200	Hair	Variable	CE

DOA Tests (Urine)

Cat. No.	Product	Test Item	Specimen	Format	Sensitivity	Qualification
W007	AMP	Amphetamine	Urine	Cassette/Panel/Cup	1000/500 ng/mL	CE
W008	BAR	Barbiturates	Urine	Cassette/Panel/Cup	300 ng/mL	CE
W009	BZO	Benzodiazepines	Urine	Cassette/Panel/Cup	300 ng/mL	CE; CLIA WAIVED
W010	COC	Cocaine	Urine	Cassette/Panel/Cup	300/150 ng/mL	CE; CLIA WAIVED; NMPA
W011	mAMP/MET	Methamphetamine	Urine	Cassette/Panel/Cup	1000/500 ng/mL	CE; CLIA WAIVED; NMPA
W012	MDMA	Methylenedioxymethamphetamine; Ecstasy	Urine	Cassette/Panel/Cup	500 ng/mL	CE; NMPA
W013	BUP	Buprenorphine	Urine	Cassette/Panel/Cup	10 ng/mL	CE; CLIA WAIVED
W014	MOP	Morphine	Urine	Cassette/Panel/Cup	300 ng/mL	CE; NMPA

Qualitative Rapid Diagnostic Family

Cat. No.	Product	Test Item	Specimen	Format	Sensitivity	Qualification
W015	MTD	Methadone	Urine	Cassette/Panel/Cup	300 ng/mL	CE; CLIA WAIVED
W016	OPI	Opiate	Urine	Cassette/Panel/Cup	2000 ng/mL	CE; CLIA WAIVED
W017	PCP	Phencyclidine	Urine	Cassette/Panel/Cup	25 ng/mL	CE; CLIA WAIVED
W018	TCA	Tricyclic Antidepressants	Urine	Panel/Cup	1000 ng/mL	CE
W019	THC	Marijuana	Urine	Cassette/Panel/Cup	50 ng/mL	CE; CLIA WAIVED
W021	OXY	Oxycodone	Urine	Cassette/Panel/Cup	100 ng/mL	CE; CLIA WAIVED
W055	KET	Ketamine	Urine	Cassette/Panel/Cup	1000 ng/mL	CE; NMPA
W057	PPX	Propoxyphene	Urine	Cassette/Panel/Cup	300 ng/mL	CE
W074	EDDP	Ethylendiamine-dimethylphosphinic	Urine	Cassette/Panel/Cup	100 ng/mL	CE
W086	TRA	Tramadol	Urine	Cassette/Panel/Cup	200 ng/mL	CE
W087	FTY	Fentanyl	Urine	Cassette/Panel/Cup	20 ng/mL	CE
W089	K2	Synthetic Cannabis	Urine	Panel/Cup	50 ng/mL	CE
W139	COT	Cotinine	Urine	Cassette/Panel/Cup	100 ng/mL	CE
W140	ETG	Ethyl Glucuronide	Urine	Panel/Cup	500 ng/mL	CE

DOA Tests (Oral Fluid)

Product	Test Item	Specimen	Format	Sensitivity	Qualification
AMP	Amphetamine	Oral Fluid	T-Cube	50 ng/mL	CE
BAR	Barbiturates	Oral Fluid	T-Cube	60 ng/mL	CE
BUP	Buprenorphine	Oral Fluid	T-Cube	5 ng/mL	CE
BZO	Benzodiazepines	Oral Fluid	T-Cube	30 ng/mL	CE
COC	Cocaine	Oral Fluid	T-Cube	20 ng/mL	CE
EDDP	Ethylendiamine-dimethylphosphinic	Oral Fluid	T-Cube	20 ng/mL	CE
FTY	Fentanyl	Oral Fluid	T-Cube	30 ng/mL	CE
MDMA	Methylenedioxymethamphetamine; Ecstasy	Oral Fluid	T-Cube	100 ng/mL	CE
MET	Methamphetamine	Oral Fluid	T-Cube	50 ng/mL	CE
MTD	Methadone	Oral Fluid	T-Cube	30 ng/mL	CE
OPI	Opiate	Oral Fluid	T-Cube	40 ng/mL	CE
PCP	Phencyclidine	Oral Fluid	T-Cube	10 ng/mL	CE
THC	Marijuana	Oral Fluid	T-Cube	25 ng/mL	CE
OXY	Oxycodone	Oral Fluid	T-Cube	20 ng/mL	CE

Optical Coagulation Analyzer

OCG-102

PT,APTT,FIB,TT,ACT

- **Sample Type:** Venous/Capillary whole blood
- **Specimen volume:** 20µL
- **Long shelf life:** 18 months
- **Precision:** CV≤5%
- **Room-temperature storage:** 2-30°C
- **Portable:** Rechargeable lithium battery



Cat. No.	Item	Category	Specification	Qualification
W955	Optical Coagulation Analyzer	Instrument	/	CE NMPA
W480-484	PT,APTT,FIB,TT,ACT	Test strip	24 T/Kit	CE NMPA

Cat. No.	Item	Specimen Type	Test strip Volume	Reference Range	Reportable Range
W480	PT	Citrated WB/Capillary WB	20 µL	7~90 s	10~14 s
W481	APTT	Citrated WB	20 µL	18~120 s	22~38 s
W482	FIB	Citrated WB	20 µL	1.5~6 g/L	2~4 g/L
W484	TT	Citrated WB	20 µL	10~90 s	14~20 s
W483	ACT	Citrated WB	20 µL	50~600 s	80~140 s
W483P0007	ACT (Non-anticoagulant)	Fresh WB	20µL	50~600s	80~140s

* Note: INR is calculated by PT.

Thrombelastography Analyzer

TLT-101

Fast, Accurate

- Reliable results can be obtained within 20mins~2hours

Easy to Use

- Integrated large touch screen
- Linux operating system
- Immediate, intuitive reading of results

High Throughput

- Four independent channels
- Compatible with various cup types

Intelligent Operation

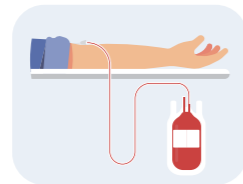
- Automatic loading
- Automatic lifting
- Intelligent cover removal

Patented Design

- Small size and light weight
- Six technical modules



Perioperative Bleeding Management



Guidance for Blood Transfusion



Monitoring of antiplatelet therapy



Detection of heparin therapy

Test Items	Reportable Parameters
Thrombelastography Kaolin Test Kit (Coagulation Method)	R, K, α , MA, LY30, EPL
Thrombelastography Rapid Test Kit (Coagulation Method)	ACT, K, α , MA, LY30, EPL
Thrombelastography Platelet Function-AA pathway Test Kit (Coagulation Method)	AA% inhibition
Thrombelastography Platelet Function-ADP pathway Test Kit (Coagulation Method)	ADP% inhibition
Thrombelastography Platelet Function-AA&ADP pathways Test Kit (Coagulation Method)	AA&ADP% inhibition
Thrombelastography Heparinase Test Kit (Coagulation Method)	R'=R(Kaolin Cup)-R(Heparinase Cup)
Thrombelastography Quality Control	R, K, α , MA

Blood Gas Analyzer

BGA-102

- Specimen Type:** Arterial blood/Capillary blood
- Minimal Specimen Volume:** 80 μ L
- Time to Result:** 180s

Friendly Storage Condition:

- Cartridge can be stored at room temperature (4-30°C) for up to 12 months.

Convenient:

- Simplified two-step operation
- Video-guided operation
- Automated injection & calibration

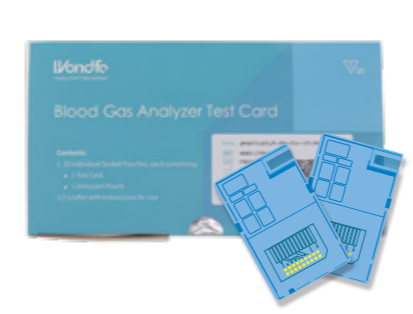
Maintenance-free:

- No liquid path inside the instrument
- Ready-to-use cartridge

Portable:

- Lightweight with carry handle
- Integrated printer, battery, scanner





10 Measured Parameter
pH, pCO₂, pO₂, K⁺, Na⁺, Ca⁺⁺, Cl⁻, Hct, Glu, Lac

24 Calculated Parameter
pH(T), cH⁺(T), RI(T), pCO₂(T), pO₂(T), pO₂(A-a)(T), pO₂(a/A)(T), pO₂(T)/FI O₂, pO₂/FI O₂, pO₂(A-a), pO₂(a/A), cH⁺, ct CO₂, sO₂(est), RI, BE(B), BB(B), BE(ecf), Ca⁺⁺(7.4), AnGap, HCO₃⁻std, HCO₃⁻(act), tHb(est), POP

Cat. No.	Test Item	Specification	Qualification
W459	pH, pCO ₂ , pO ₂	25T/Kit	CE NMPA
W461	K ⁺ , Na ⁺ , Ca ⁺⁺ , Cl ⁻	25T/Kit	CE NMPA
W465	pH, pCO ₂ , pO ₂ , K ⁺ , Na ⁺ , Cl ⁻ , Ca ⁺⁺ , Hct	25T/Kit	CE NMPA
W466	pH, pCO ₂ , pO ₂ , K ⁺ , Na ⁺ , Cl ⁻ , Ca ⁺⁺ , Hct, Glu, Lac	25T/Kit	CE NMPA

Automatic Blood Gas Analyzer

Ucare-6000



- 10.1 Inch Capacitive Touch Screen
- Built-in Thermal Printer
- Minimal Specimen Volume: 90µL
- Built-in Scanner
- Built-in Rechargeable Battery
6 hours standby without power supply
- Time to Result: 120s
- Specimen Type:
Arterial blood/Venous blood/Capillary blood



Maintenance-free:

- No liquid path inside the instrument

Convenient:

- Simplified one-step operation
- Video-guided operation.

Intelligent:

- Automated calibration & IQC.
- Automatically identify and mark abnormal sample
- Self-cleaning function (remove bubble and clot)

10 Measured Parameters :

pH, pCO₂, pO₂, K⁺, Na⁺, Cl⁻, Ca⁺⁺, Glu, Lac, Hct

24 Calculated Parameters :

cH⁺(T), pH(T), pCO₂(T), pO₂(T), pO₂(A-a)(T), pO₂(a/A)(T), RI(T), pO₂(T)/FiO₂, cH⁺, Ca⁺⁺(7.4), HCO₃⁻-act, HCO₃⁻-std, BE(B), BB(B), BE(ecf), AG, sO₂(est), tHb(est), ctCO₂, pO₂(A-a), pO₂(a/A), RI, POP, pO₂/FiO₂



Ucare-6000 Solution Pack

- **All-in-One Design:**
Integrated design of test card, calibration and IQC
- **Friendly Storage Condition:**
Room temperature (2-30°C) storage up to 7 months
On-board shelf life up to 30 days.
- **Ready-to-Use**

Immunofluorescence Quantitative Test System

Finecare™ Platform



Finecare™ FIA Meter III Plus (FS-205)

Finecare™ FIA Meter II Plus SE (FS-114)

Finecare™ FIA Meter Plus (FS-113)

Finecare™ FIA Meter Automatic (FS-301)

Finecare™ FIA Meter series is a fluorescence immunochromatographic analysing system which can help diagnose conditions such as infection, diabetes, cardiovascular diseases, renal injury and cancers, etc.

- **Reliable**
 - CE/NMPA/NGSP/IFCC Certified
 - Fast and Accurate
 - Full Traceability
 - QC Available
- **Competitive**
 - Full Test Line
 - Result in 3~15 mins
 - Cost-efficient
 - Built-in Temperature Control
- **Easy-to-use**
 - LCD Touch Screen
 - Multiple Language Available
 - Internal Thermal Printer
- **Room Temperature**
 - Store & Operate at 4~30°C
 - 24 Months Shelf Life
- **Date Management and Transmission**
 - HIS/LIS
- **Application**
 - Laboratory, ER, Cardiology, ICU, Respiratory, Pediatrics, etc.

Immunofluorescence Quantitative Test System

TEST MENU

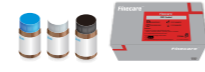
Instrument



Reagent



Quality Control



Cardiac

- cTn I
- cTn T
- Myo
- CK-MB
- H-FABP
- NT-proBNP
- BNP
- hsCRP
- Lp-PLA2
- ST2

Thyroid

- T3
- T4
- TSH
- fT3
- fT4

RA

- Anti-CCP
- ASO
- RF

Sex Hormone

- β-HCG
- LH
- FSH
- Prog
- PRL
- E2
- Testosterone
- AMH

Anemia

- Ferritin
- Vitamin B12

Gastroenterology

- iFOB
- H.pylori Ag

Hypertension

- Cortisol

Thrombus

- D-Dimer

Tumor

- AFP
- PSA
- CEA
- fPSA
- CA125
- CA15-3
- CA19-9

Inflammation

- PCT
- CRP
- SAA
- IL-6

Diabetes

- HbA1c
- Insulin
- C-Peptide

Allergy

- Total IgE

Respiratory Infection

- COVID-19 Ag
- Adeno
- RSV
- Strep A
- Mycoplasma
- Flu A&B

Kidney

- MAU
- CysC
- NGAL
- β2-MG

Brain Injury

- S100β

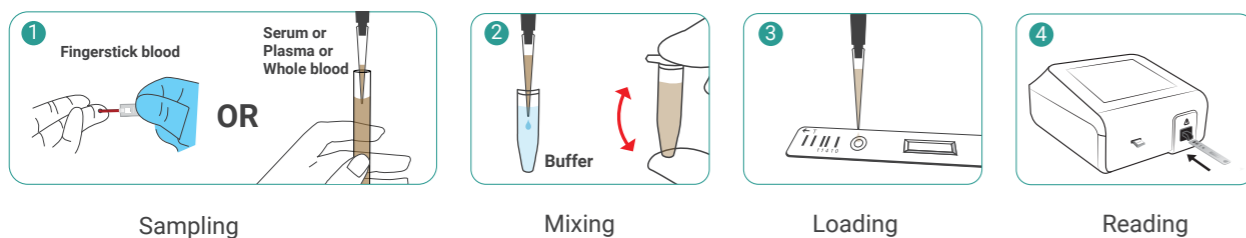
Bone Metabolism

- Vitamin D

Infectious Disease

- Dengue NS1-Ag

DISPOSABLE REAGENT CARTRIDGES PARAMETER



Cat. No.	Category	Test Item	Diseases	Specimen Type	Specimen Volume	Reaction Time	Measuring Range	Qualification
W241P0002	Bone Metabolism	Vitamin D	Vitamin D deficiency	S/P	75 µL	15 mins	5~100 ng/mL	CE NMPA
W241P0006/ W241PP007		Vitamin D	Vitamin D deficiency	WB/S/P	10 µL	8 mins	5~100 ng/mL	CE
W207		HbA1c	Diabetes Mellitus	WB	10 µL	5 mins	4.0~14.5%	CE IFCC NGSP NMPA
WW04P0001	Diabetes	Insulin	Glucose metabolism disorders	WB/S/P	75 µL	10 mins	2 ~ 300 mIU/L	CE
WW03P0001		C-Peptide	Carbohydrate metabolism disorders	WB/S/P	75 µL	10 mins	0.1 ~ 40 ng/mL	CE
W206	Kidney Function Markers	One Step MAU	Renal Injury	Urine	75 µL	3 mins	5~300 mg/L	CE NMPA
W219		CysC	Renal Injury	WB/S/P	10 µL	5 mins	0.2~10 mg/L	CE NMPA
W228		NGAL	Renal Injury	Urine	75 µL	15 mins	10~1500 ng/mL	CE NMPA
W229		β2-MG	Proximal Renal Tubule Dysfunction	WB/S/P	10 µL	10 mins	0.3~20 mg/L	CE NMPA
W231	Thyroid Function	T3	Thyroid Malfunction	WB/S/P	75 µL	15 mins	0.61~9.22 nmol/L	CE NMPA
W232		T4	Thyroid Malfunction	WB/S/P	75 µL	15 mins	12.87~300 nmol/L	CE NMPA
W220		TSH	Thyroid Malfunction	WB/S/P	75 µL	15 mins	0.1~100 mIU/L	CE NMPA
W200		fT3	Thyroid Malfunction	WB/S/P	75 µL	15 mins	0.40~50.00 pmol/L or 0.26~32.55 pg/mL	CE NMPA
W259		fT4	Thyroid Malfunction	WB/S/P	75 µL	15 mins	1.00~100 pmol/L or 0.078~7.77 ng/dL	CE NMPA
W225	Sex Hormone Markers	β-HCG	Fertility	WB/S/P	20 µL	15 mins	2~200,000 mIU/mL	CE NMPA
W244		LH	Fertility	WB/S/P	75 µL	15 mins	1~100 mIU/mL	CE NMPA
W245		FSH	Fertility	WB/S/P	75 µL	15 mins	1~100 mIU/mL	CE NMPA
W233		Prog	Fertility	WB/S/P	75 µL	15 mins	1.5~60 ng/mL	CE NMPA
W246P0001		PRL	Fertility	WB/S/P	75 µL	15 mins	1~200 ng/mL	CE NMPA
W247-C4P1-E		E2	Fertility	WB/S/P	75 µL	15 mins	9~3000 pg/mL	CE NMPA
W248-C4P1-E		Testosterone	Fertility	WB/S/P	75 µL	15 mins	0.2~15 ng/mL	CE NMPA
W257P0001	AMH	Fertility	WB/S/P	75 µL	15 mins	0.1~16 ng/mL	CE NMPA	
W202	Cardiac Markers	NT-proBNP	Heart Failure	WB/S/P	75 µL	15 mins	18~35000 pg/mL	CE NMPA
W203		cTn I	Myocardial Infarction	WB/S/P	75 µL	15 mins	0.1~50 ng/mL	CE NMPA
W204		Myo	Myocardial Infarction	WB/S/P	75 µL	15 mins	2.0~400 ng/mL	CE NMPA
W205		CK-MB	Myocardial Infarction	WB/S/P	75 µL	15 mins	0.3~100 ng/mL	CE NMPA
W217		H-FABP	Myocardial Infarction	WB/S/P	75 µL	15 mins	1~120 ng/mL	CE NMPA
W216		3 in 1 (cTn I/Myo/CK-MB)	Myocardial Infarction	WB/S/P	75 µL	15 mins	Same with single items	CE NMPA
W222		BNP	Heart Failure	WB/P	75 µL	15 mins	5~5000 pg/mL	CE NMPA
W223		2 in 1 (cTn I/ NT-proBNP)	Myocardial Infarction	WB/S/P	75 µL	15 mins	Same with single items	CE NMPA
W240		hsCRP	CVD	WB/S/P	10 µL	3 mins	0.1~10mg/L	CE NMPA
W254P0001		One Step cTnT	Myocardial Infarction	WB/S/P	100µL-WB 75µL-S/P	15 mins	0.03~10 ng/mL	CE NMPA
W242	Lp-PLA2	Atherosclerosis	WB/S/P	75 µL	15 mins	10~1000 ng/mL	CE NMPA	
W243	ST2	Heart Failure	WB/S/P	75µL	15 mins	10~400ng/mL	CE	
W239	Brain Injury Markers	S100β	Cerebral Ischemia Cerebral Hemorrhage	WB/S/P	75 µL	15 mins	0.05~10 ng/mL	CE NMPA
W211	Thrombus Markers	D-Dimer	Thrombosis	WB/P	15µL-WB 10µL-P	5 mins	0.1~10 mg/L	CE NMPA
W227		One step D-Dimer	Thrombosis	WB/P	100µL-WB 75µL-S/P	15 mins	0.1~10 mg/L	CE NMPA
W210/ W210P0004	Inflammation Markers	PCT	Sepsis	WB/S/P	75µL-WB 50µL-S/P	15 mins	0.1~100 ng/mL	CE NMPA
W201/ W201P0008		CRP (hsCRP+CRP)	Infection	Fingerstick or Venous	8.5µL-WB 5µL-S/P	3 mins	0.5~200 mg/L	CE NMPA
W218		2 in 1 (CRP+PCT)	Infection	WB/S/P	75 µL	15 mins	CRP:0.5~150 mg/L PCT:0.1~100 ng/mL	CE NMPA
W221/ W221P0004		SAA	Infection	Fingerstick or Venous	8.5µL-WB 5µL-S/P	3 mins	1 ~ 500 mg/L	CE NMPA
W251P0001		IL-6	Infection	WB/S/P	75 µL	15 mins	3~4000 pg/mL	CE NMPA
W297P0001	Rheumatoid Arthritis	ASO	Rheumatic fever and glomerulonephritis	WB/S/P	10 µL	5 mins	20~1000 IU/mL	CE
W262P0001		RF	Rheumatoid Arthritis	WB/S/P	10 µL	5 mins	10 ~ 650 IU/mL	CE
WW01P0001		Anti-CCP	Rheumatoid Arthritis	WB/S/P	10 µL	10 mins	3.5-300 U/mL	CE
W282P0001	Infectious Disease	Dengue NS1 Ag	Infectious disease	WB/S/P	75 µL	12 mins	Qualitative	CE
W298P0001	Allergy	Total IgE	Allergic diseases	WB/S/P	75 µL	10 mins	1~1000 IU/mL	CE
W250	Hypertension	Cortisol	Cortisol disorders	WB/S/P	75 µL	15 mins	50~1000 nmol/L	CE NMPA
W269P0001	Anemia Markers	Ferritin	Iron metabolism	WB/S/P	75 µL	10 mins	5 ~ 1000 ng/mL	CE NMPA
WX01P0001		Vitamin B12	VB12 Deficiency	S/P	40µL	10 mins	80~2000pg/mL	CE

Immunofluorescence Quantitative Test System

Cat. No.	Category	Test Item	Diseases	Specimen Type	Specimen Volume	Reaction Time	Measuring Range	Qualification
W279P0001	Gastroenterology	iFOB	Gastrointestinal bleeding	Feces	6 different parts of the feces	5 mins	25~1000 ng/mL	CE
W270P0001		H.pylori Ag	Infectious disease	Feces		10 mins	Qualitative	CE
W208	Tumor Markers	AFP	Liver Cancer	WB/S/P	75 µL	15 mins	5~400 ng/mL	CE, NMPA
W209		PSA	Prostate Cancer	WB/S/P	75 µL	15 mins	2~100 ng/mL	CE, 0123, NMPA
W226		CEA	Liver Cancer	WB/S/P	75 µL	15 mins	1~500 ng/mL	CE, NMPA
W230		fPSA	Cancer	WB/S/P	75 µL	15 mins	0.2~30 ng/mL	CE, 0123, NMPA
WW14P0001		CA125	Ovarian cancer	WB/S/P	75µL	12 mins	5 ~ 700 U/mL	CE
WW15P0001		CA15-3	Breast cancer	WB/S/P	75µL	12 mins	5 ~ 300 U/mL	CE
WW16P0001	CA19-9	Pancreatic Cancer	WB/S/P	75µL	15 mins	8 ~ 1000 U/mL	CE	
W286		COVID-19 Ag	2019-nCoV infection	NP/ OP	/	15 mins	Qualitative	CE
WW06P0001	Respiratory Infection	Adeno	Adenovirus infection	Nasal/NP	/	10 mins	Qualitative	CE
WW08P0001		Flu A&B	Influenza infection	Nasal/NP	/	10 mins	Qualitative	CE
WW09P0001		Mycoplasma	Mycoplasma Pneumoniae infection	Nasal/NP	/	10 mins	Qualitative	CE
WW10P0001		RSV	RSV infection	NP	/	10 mins	Qualitative	CE
WW11P0001		Strep A	Strep A infection	OP	/	5 mins	Qualitative	CE
WW07P0001		Adeno/RSV Ag	Adeno/RSV infection	NP	/	10 mins	Qualitative	CE
WW12P0001		COVID/Influenza Ag	COVID/Flu infection	Nasal/NP	/	10 mins	Qualitative	CE

AUTOMATIC REAGENT KITS PARAMETER



Sampling



Loading



Testing



Reading

Category	Cat. No.	Test Item	Diseases	Specimen Type	Reaction Time	Measuring Range	Qualification
Inflammation Markers	W210P0017	PCT	Sepsis	WB/S/P	15 mins	0.1-100 ng/mL	CE, NMPA
	W201P0015	CRP (hsCRP+CRP)	Inflammation	WB/S/P	3 mins	0.5-200 mg/L	CE, NMPA
Diabetes	W207P0005	HbA1c	Diabetes Mellitus	WB	5 mins	4-14.5%	CE, NMPA
Cardiac Markers	W203P0012	cTnl	Myocardial Infarction	WB/S/P	15 mins	0.1-50 ng/mL	CE, NMPA
	W205P0007	CK-MB	Myocardial Infarction	WB/S/P	15 mins	0.3-100 ng/mL	CE, NMPA
	W202P0013	NT-proBNP	Heart Failure	WB/S/P	15 mins	18~35000 pg/mL	CE, NMPA
Thrombus Markers	W211P0012	D-Dimer	Thrombosis	P/WB	5 mins	0.1-10 mg/L	CE, NMPA

Finecare™ New Platform



Finecare™ FIA Meter X1 (FS-1000)



Finecare™ FIA Meter X2 (FS-2000)



Finecare™ FIA Meter X2 Plus (FS-2100)



Stability

TRFIA Methodology
Lower CV higher stability



Convenient

Simple operation procedure
Integrated handle design



Delicate design

Automatic reagent door
Charging indicator light



Instant results

Result in 6s under quick mode
Result in 8 min under standard mode

Specification

- Dimension: 209*290*187 mm
- Weight: 3.5 kg

Built-in Code Scanner

- No need for ID chip
- Ample batch information

Built-in Thermal Printer

- Real-time auto printing
- External printer supported

Rechargeable Internal Battery

- 10400 mAh battery
- 24-hour standby
- Low battery alert

Large Display

- 8-inch capacity touch screen
- Intuitive user interface
- Smooth operation experience like smart-phone

Connectivity

- Wifi connection to Bi-directional LIS/HIS
- RS232 and ethernet port
- 4 USB ports

Linux System

- Smooth operation
- Security system
- Custom intelligent management module
- Multi-user management

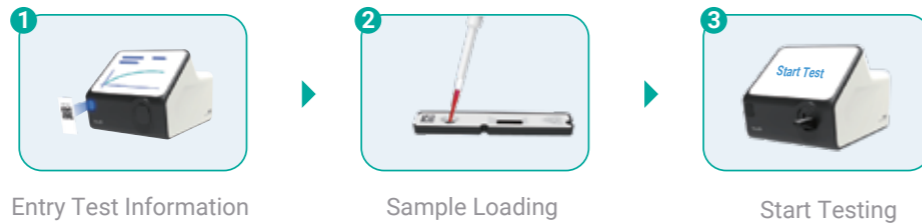
Immunofluorescence Quantitative Test System

Mono-test Chemiluminescence Quantitative Test System

- 1 **Faster to Get the Result:** Only 8 mins
- 2 **New Items:** hs-cTnI testing available
- 3 **Excellent CV and Accuracy with Optimized FIA Methodology**
Satisfying and stable results delivered in short time



Operation Procedure



Cat. No.	Category	Test Item	Diseases	Specimen Type	Specimen Volume	Reaction Time	Measuring Range	Qualification
WS02P0001	Cardiac Markers	One Step hs-cTnI/CK-MB/Myo	Myocardial Infarction	S/P/WB	100uL whole blood; 75ul serum/plasma	8 mins	hs-cTnI: 0.02 ~ 50 ng/mL CK-MB: 1 ~ 80 ng/mL Myo: 10 ~ 600 ng/mL	CE NMPA
WS01P0001		One Step hs-cTnI		S/P/WB	100uL whole blood; 75ul serum/plasma	8 mins	0.02 - 50 ng/mL	CE NMPA
WS04P0001		One Step NT-proBNP	Heart Failure	S/P/WB	100uL whole blood; 75ul serum/plasma	8 mins	18pg/mL-35000pg/mL	CE NMPA
WS03P0001		One Step hs-cTnI		P/WB	100uL whole blood; 75ul plasma	8 mins	5-5000pg/mL	CE NMPA
WS06P0001	Thrombus Markers	One Step D-Dimer	Thrombosis	P/WB	100uL whole blood; 75ul plasma	5 mins	0.10 - 10.00mg/L FEU	CE
WS08P0001	Inflammation Markers	CRP	Infection	S/P/WB	8.5uL whole blood; 5ul serum/plasma	3 mins	0.3 ~ 200 mg/L	CE
WS14P0001		One Step IL-6		S/P/WB	100uL whole blood; 75ul serum/plasma	8 mins	3 ~ 4000 pg/mL	CE
WS09P1001		SAA		S/P/WB	8.5uL whole blood; 5ul serum/plasma	8 mins	1~ 200 mg/L	CE
WS09P1002								
WS12P0001		One Step PCT	Sepsis	S/P/WB	100uL whole blood; 75ul serum/plasma	8 mins	0.020 ~100 ng/mL	CE
WS16P1001	Respiratory Infection	Adeno	Adenovirus infection	Nasal/NP	/	10 mins	Qualitative	CE
WS16P1002								
WS18P1001		COVID-19 Ag	2019-nCoV infection	NP/OP	/	15 mins	Qualitative	CE
WS18P1002								
WS20P1001		Flu A&B	Influenza infection	Nasal/NP	/	10 mins	Qualitative	CE
WS20P1002								
WS21P1001		Mycoplasma	Mycoplasma Pneumoniae infection	Nasal/NP	/	10 mins	Qualitative	CE
WS21P1002								
WS22P1001		RSV	RSV infection	NP	/	10 mins	Qualitative	CE
WS22P1002								
WS23P1001	Strep A	Strep A infection	OP	/	5 mins	Qualitative	CE	
WS23P1002								
WS17P1001	Adeno/RSV Ag	Adeno/RSV infection	NP	/	10 mins	Qualitative	CE	
WS17P1002								
WS19P1001	COVID/Influenza Ag	COVID/Flu infection	Nasal/NP	/	10 mins	Qualitative	CE	
WS19P1002								

ACCURE CLIA Platform



ACCURE is a series of automatic bench-top chemiluminescence immunoassay (CLIA) systems using mono-test reagent cartridge. It provides reliable test results with less maintenance cost.

Flexible & Efficient

Simultaneous processing of different parameters

Maintenance-free

No liquid path inside
600 days MTBF

User-friendly

Easy operation requiring only 30-minute training

Fast

10 mins for the first result,
Up to 120 tests/hour

Reliable Accuracy

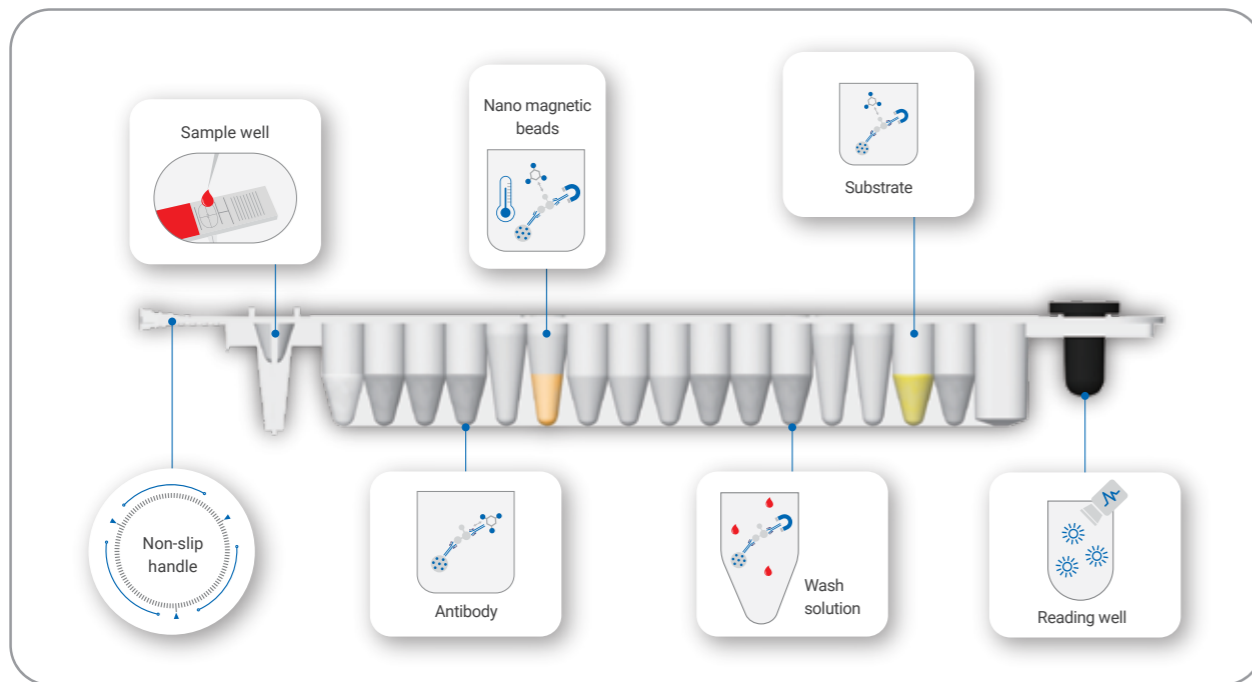
High sensitivity
Wide measuring range

Compact Design

70% smaller than traditional CLIA analyzer

*Coming soon

Mono-test Chemiluminescence Quantitative Test System



EXCELLENT AS CLIA

- ALP-APS-5 chemiluminescence
- Excellent reagent performance
- Nano magnetic particles for separation
- Broad menu with featured items
- Reliable calibration and quality control system

EASY AS POCT

- Mono-test cartridge, ready-to-use
- Avoid cross-contamination
- Short turnaround time (TAT)
- All-in-one design, no consumables and extra cost
- Built-in scanner reads reagent information automatically



TEST MENU

Tumor

- CEA
- AFP
- CA125
- CA15-3
- tPSA
- fPSA
- CA19-9
- PGI
- PGII
- G-17
- CA72-4
- HE4
- CYFRA 21-1
- CA50
- CA242
- SCC
- NSE
- ProGRP

Infectious Disease

- Dengue NS1 Ag
- Dengue IgG
- Dengue IgM
- HIV
- HBsAg
- Anti-HCV
- Anti-TP
- H.Pylori (HP)

Inflammation

- PCT
- IL-6
- CRP
- SAA

Bone Metabolism

- 25-OH Vitamin D Total
- PTH

Available

Fertility

- AMH
- Progesterone
- Testosterone
- Prolactin
- LH
- E2
- FSH
- β-HCG
- Inhibin B
- fTesto
- DHEA-S

TORCH

- Toxo IgG
- Toxo IgM
- Rubella IgG
- Rubella IgM
- CMV IgG
- CMV IgM
- HSV-1 IgG
- HSV-1 IgM
- HSV-2 IgG
- HSV-2 IgM

Thrombus

- D-dimer
- TM
- TAT
- FDP
- PIC
- t-PAIC

Anemia

- VB12
- Folate
- Ferritin

In Development

Cardiac

- cTnI
- hs cTnI
- CK-MB
- MYO
- BNP
- NT-proBNP
- H-FABP
- ST2
- hs cTnT
- hs-CRP

Thyroid

- TSH
- TT3
- TT4
- FT3
- FT4
- Tg
- Anti-Tg
- Anti-TPO

Allergy

- IgE

DIABETES

- Insulin
- C-Peptide
- INS-Ab

Others

- S100β
- Cortisol
- ACTH

ACCRE PRODUCT CATALOGUE NUMBER

Category	Parameter	Tisenc Cat. No.	Wondfo Cat. No.	Sample Volume (µL)	Sample Type*	Test Time (mins)	Measuring Range	Qualification
Cardiology	cTnI	W121C	F121C	75	S/P/WB	15	0.05-50 ng/mL	CE, NMPA
	hs-cTnI	W122C	F122C	75	S/P/WB	15	0.005-50 ng/mL	CE, NMPA
	MYO	W123C	F123C	75	S/P/WB	15	1-1000 ng/mL	CE, NMPA
	CK-MB	W124C	F124C	75	S/P/WB	15	0.1-300 ng/mL	CE, NMPA
	BNP	W125C	F125C	75	P/WB	15	15-5000 pg/mL	CE, NMPA
	NT-proBNP	W126C	F126C	75	S/P/WB	15	15-35000 pg/mL	CE, NMPA
	H-FABP	W127C	F127C	75	S/P/WB	15	0.5-160 ng/mL	CE, NMPA
	hs cTnT	W86C	F86C	75	S/P/WB	15	5.0-10000.0 ng/L	CE
	ST2	W87C	F87C	75	S/P/WB	15	4.00-400.00 ng/m	CE
Thyroid	TSH	W30C	F30C	75	P/S	25	0.01-100 µIU /mL	CE, NMPA
	TT3	W31C	F31C	75	P/S	25	0.3-10 nmol/L	CE, NMPA
	TT4	W32C	F32C	75	P/S	25	6.44-320 nmol/L	CE, NMPA
	FT3	W33C	F33C	70	P/S	25	1.0-50 pmol/L	CE, NMPA
	FT4	W34C	F34C	70	P/S	25	2-77.2 pmol/L	CE, NMPA
	Tg	W110C	F110C	55	P/S	25	0.10-500.00 ng/mL	CE
	Anti-TPO	W150C	F150C	55	P/S	25	2.00-1000.00 IU/mL	CE
	Anti-Tg	W151C	F151C	55	P/S	28	1.50~2500.00 IU/mL	CE
	Fertility	FSH	W41C	F41C	70	P/S	15	0.2-200 mIU/mL
LH		W42C	F42C	70	P/S	15	0.1-200 mIU/mL	CE, NMPA
PRL		W43C	F43C	70	P/S	15	4-5000 µIU/ml	CE, NMPA
AMH		W117C	F117C	75	P/S	15	0.01-23 ng/mL	CE, NMPA
Progesterone		W44C	F44C	100	P/S	23	0.5-191 nmol/L	CE, NMPA
Testosterone		W45C	F45C	100	P/S	23	0.1-15 ng/mL	CE, NMPA
E2		W40C	F40C	100	P/S	23	15-3000 pg/mL	CE, NMPA
Infectious Disease	β-HCG	W46C	F46C	60	P/S	15	1-5000 mIU/mL	CE, NMPA
	Dengue NS1 Ag	W115C	F115C	75	P/S	15	0.3-300 RU/mL	CE
	Dengue IgG	W114C	F114C	75	P/S	25	0.3-300 RU/mL	CE
Anemia	Dengue IgM	W113C	F113C	75	P/S	25	0.3-300 RU/mL	CE
	Ferritin	W06C	F06C	60	P/S	15	1-2000 ng/mL	CE, NMPA
	Folate	W119C	F119C	85	P/S	28	1.0-20 ng/mL	CE, NMPA
Bone Metabolism	VB12	W118C	F118C	110	P/S	35	125-2000 pg/mL	CE, NMPA
	25-OH VD	W120C	F120C	75	P/S	25	3.0-100 ng/mL	CE, NMPA

* S: Serum, P: Plasma, WB: Whole Blood

Category	Parameter	Tisenc Cat. No.	Wondfo Cat. No.	Sample Volume (µL)	Sample Type*	Test Time (mins)	Measuring Range	Qualification	
Allergy	IgE	W107C	F107C	65	P/S	15	0.3-2500 IU/mL	CE	
	AFP	W60C	F60C	70	P/S	15	0.5-1000 IU/mL	CE	
	CEA	W85C	F85C	65	P/S	15	0.2-1000 ng/mL	CE	
	CA125	W104C	F104C	65	P/S	15	0.6-5000 U/mL	CE	
	CA19-9	W105C	F105C	65	P/S	15	0.6-1000 U/mL	CE	
	tPSA	W84C	F84C	65	P/S	15	0.1-100 ng/mL		
	fPSA	W103C	F103C	55	P/S	15	0.010-50.000 ng/mL		
	CA15-3	W106C	F106C	65	P/S	15	1-300 U/mL	CE	
	CA72-4	W63C	F63C	55	P/S	15	0.20-300.00 U/mL	CE	
Tumor	HE4	W64C	F64C	55	P/S	15	15.00-1500pmol/L	CE	
	CYFRA 21-1	W65C	F65C	55	P/S	15	0.10-500.00 ng/mL	CE	
	G-17	W93C	F93C	55	P/S	15	1.00-320.00pmol/L	CE	
	PG I	W91C	F91C	55	P/S	15	1.00-200.00 ng/mL	CE	
	PG II	W92C	F92C	55	P/S	15	0.5~100 ng/mL	CE	
	CA50	W70C	F70C	55	S	15	1-180 U/mL	CE	
	CA242	W69C	F69C	55	S	15	3-300 U/mL	CE	
	SCC	W68C	F68C	55	P/S	15	0.1-70 ng/mL	CE	
	NSE	W66C	F66C	55	S	15	0.05-370 µg/L	CE	
Thrombus	ProGRP	W67C	F67C	55	P/S	15	3-5000 pg/mL	CE	
	D-Dimer	W128C	F128C	75	P/WB	15	0.045-10 µg/mL(FEU)	CE, NMPA	
	TAT	W161C	F161C	55	P/WB	28	0.40-120.00ng/mL	CE	
	FDP	W162C	F162C	55	P/WB	21	2.50-80.00 µg/mL	CE	
	PIC	W163C	F163C	55	P/WB	28	0.05-40.00µg/mL	CE	
	t-PAIC	W164C	F164C	55	P/WB	28	1.00-100.00 ng/mL	CE	
	TM	W160C	F160C	55	P/WB	28	1.00-200.00 TU/mL	CE	
	Inflammation	PCT	W116C	F116C	75	S/P/WB	15	0.04-100 ng/mL	CE, NMPA
		IL-6	W90C	F90C	75	S/P/WB	15	1.5-5000 pg/mL	CE
Brain Damage	S100β	W61C	F61C	55	S	21	0.020-39.000 µg/L	CE	
Hypertention	Cortisol	W180C	F180C	75	P/S	21	0.054-63.400 µg/dL	CE	
Diabetes	Insulin	W186C	F186C	55	P/S	15	0.2-1000.00 µU/mL	CE	
	C-Peptide	W192C	F192C	55	P/S	15	0.01-40.00 ng/mL	CE	

* S: Serum, P: Plasma, WB: Whole Blood

Fully-auto Chemiluminescence Quantitative Test System



SmarLumi™ FC-2100



Product Features

● Flexibility & Efficiency

- STAT mode supported
- Only 0.64 m² footprint with 60 sample positions
- <12 mins for the first result
- High throughput with 200T per hour
- RFID management, easy to load reagents

● Better User Experience

- Built-in touch screen operation
- Bidirectional LIS communication
- Visual management of consumables and reagents
- Cuvettes loading by dumping

Specification

Methodology	Chemiluminescence Immunoassay (CLIA)
Dimension	900 mm * 710 mm * 590 mm
Weight	140 kg
Throughput	200 T/h
Time for first result	< 12 min
Reagent position	25
Reagent specification	25 or 50 T/Bottle
Reagent refrigeration	2-8°C on board refrigeration
Sample position	60
Sample volume	5-150 µL
Sample type	Whole blood / Serum / Plasma / Urine/ Cerebrospinal fluid
Test mode	Batch / STAT
Probe system	Liquid level detection / Block detection / Collision protection
Storage capacity	≥ 60000 results
Operation system	15.6 inch touch screen /Windows 10 / bidirectional LIS compatible
Dilution function	Support automatic dilution Fixed multiple dilution Exceeded linearity range remeasurement dilution

TEST MENU

- Available
- In Development

📄 Cardiac

- cTnT
- BNP
- MYO
- hs-cTnI
- Lp-PLA2
- CK-MB
- NT-proBNP
- ST2

📄 Kidney function

- NGAL

📄 Inflammation

- IL-6
- PCT
- SAA

📄 Thyroid

- TSH
- FT3
- FT4
- TT3
- TT4
- Anti-TPO
- Anti-TG
- Tg
- CT
- T-Uptake
- TBG
- TRAb
- TSAb
- rT3

📄 TORCH

- TOXO-IgG
- TOXO-IgM
- Rubella IgG
- Rubella IgM
- CMV-IgG
- CMV-IgM
- HSV-1-IgG
- HSV-1-IgM
- HSV-2-IgG
- HSV-2-IgM

📄 Thrombus

- D-Dimer
- TM
- TAT
- FDP
- PIC
- t-PAIC

📄 Hypertension

- REN
- Cortisol
- A I
- A II
- ACTH
- ALD

📄 Gastric function

- G-17
- PGI
- PGII
- HP

📄 Tumor Markers

- CA50
- CA242
- CYFRA21-1
- SCC
- HE4
- NSE
- CA72-4
- CEA
- CA15-3
- CA125
- CA19-9
- ProGRP
- FPSA
- TPSA
- AFP
- PIVKA-II

📄 Liver fibrosis

- HA
- CIV
- P III PN-P
- LN

📄 Craniocerebral injury

- S100β

📄 Bone metabolism

- 25-OH VD
- PTH

📄 Pre-eclampsia

- PLGF
- sFlt-1

📄 Anemia

- Ferritin
- Folate
- VB12

📄 Fertility

- AMH
- β-HCG
- PLGF
- sFlt-1
- TESTO
- PROG
- E2
- PRL
- LH
- FSH
- InhB

📄 Infectious disease

- HBeAg
- HBeAb
- HBcAb
- HBsAg
- HBsAb
- anti-TP
- HIV Ag/Ab
- HCV
- M. Pneumonia IgG
- M. Pneumonia IgM
- Chlamydia pn. IgG
- Chlamydia pn. IgM

WonDx™ Automated Rapid Molecular Diagnostic System



- **Lazyman operation**
Sample in , result out
- **Scalable modular configuration**
Multi-channel configuration
Up to 8 units, 256T per day
- **Allowing various specimens**
Alveolar lavage fluid, Sputum,
Nasopharyngeal swab,
Oropharyngeal swab, Cervical swab, Urine
- **All-in-one mini lab design simplifies working procedures**
Storage at room temperature
Dry and liquid reagents prefilled
- **Powerful report capability**
7 targets can be detected in one cartridge
Extendable test panel
Result output in 15 minutes

Test Procedure



Scan the sample ID



Scan the cartridge code



Load sample

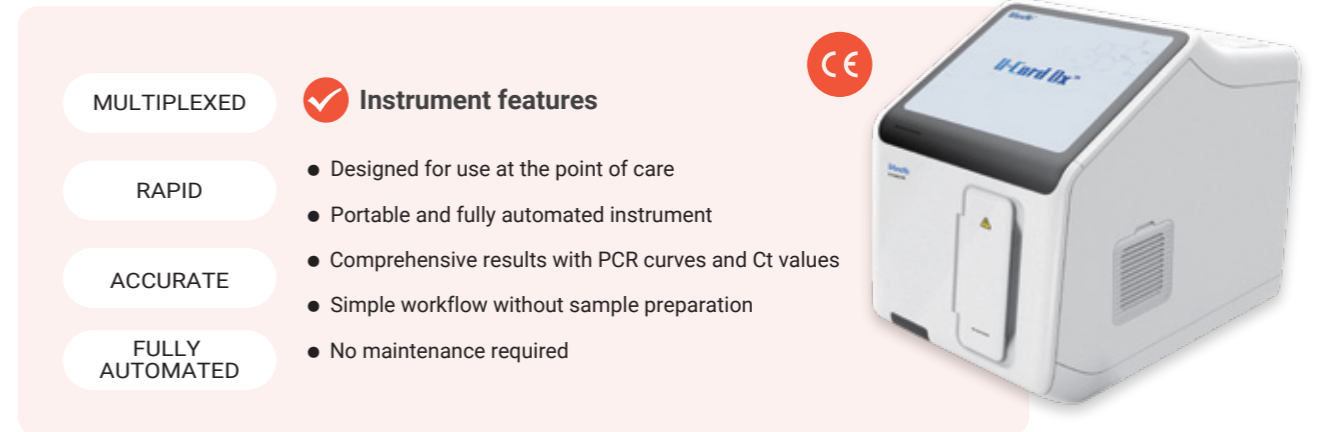


Insert the cartridge

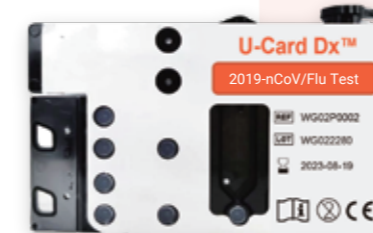
Assay menu

Product name	Detection target	Specimen type
WonDx™ 2019-nCoV/FluA/FluB/RSV Test	2019-nCoV, Flu A, Flu B, RSV	Nasopharyngeal swab, Oropharyngeal swab
WonDx™ Respiratory Pathogen Panel	2019-nCoV, Flu A, Flu B, RSV, MP, Adv, HRV	Nasopharyngeal swab, Oropharyngeal swab
WonDx™ Lower Respiratory Pathogen Panel	HI, SP, SA, KPN, BP, PA, LP	Alveolar lavage fluid, sputum
WonDx™ Vector-borne Pathogen Panel	DENV1-4, CHIKV, ZIKV, WNV	whole blood
WonDx™ MRSA/SA Test	SA (nuc), MRSA (mecA)	Nasal swabs, skin or soft tissue infection swabs
WonDx™ CT/NG Test	CT, NG	Urine, cervical or vaginal swab
WonDx™ STI Plus Test	CT, NG, UU, MG, TV, MH, HSV	Urine, cervical or vaginal swab
WonDx™ GBS Test	GBS (sip, cfb)	Vaginal and rectal swabs
WonDx™ MTB&RIF Test	MTB(IS6110), RIF (rpob)	Sputum
WonDx™ VRE Test	VRE (vanA, vanB)	Rectal swab, anal swab
WonDx™ HPV Screening Test	16, 18, 45, 12 HR HPV	cervical cells

U-Card Dx™ Molecular Diagnostic System



- MULTIPLEXED**
- RAPID**
- ACCURATE**
- FULLY AUTOMATED**
- ✓ **Instrument features**
 - Designed for use at the point of care
 - Portable and fully automated instrument
 - Comprehensive results with PCR curves and Ct values
 - Simple workflow without sample preparation
 - No maintenance required

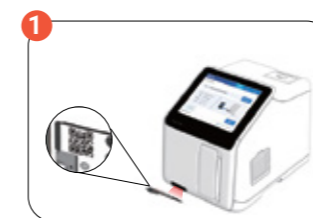


✓ Reagent features

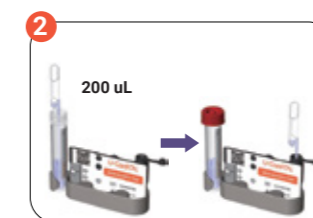
- Microfluidic cartridge design
- Lyophilized reagents for ambient temperature stability
- Closed-system design avoids contamination
- Multiplex detection up to 8 targets/controls
- 24T/box, room temperature with 18 months shelf life

3-STEP OPERATION

28~38 mins



Scan Cartridge



Load Sample



Insert Cartridge

Test Menu

● CE available ● RUO





Upper Respiratory Tract

- 2019-nCoV
- 2019-nCoV/Flu A/Flu B
- Mpox virus
- 2019-nCoV/Flu A/Flu B/RSV
- Strep A

Sexual Transmitted Infection (STI)

- GBS
- HPV 16/18 +12 highrisk
- CT/NG
- CT/NG/MG/TV

Real-Time PCR Assay Test Menu

Category	Product	Targets
Mpox Virus	Mpox Virus PCR Assay 	MPXV (F3L gene) MPXV (N3R gene)
	FluA/FluB/RSV PCR Assay 	RSV A/B Flu A Flu B
Respiratory Infection	MP/Adv/PIV PCR Assay 	<i>M. pneumoniae</i> Adenovirus Parainfluenza virus
	Respiratory-Virus PCR Assay	RSV A/B <i>M. pneumoniae</i> Flu A <i>Adenovirus</i> Flu B <i>Parainfluenza virus</i>
	Respiratory-Bacteria PCR Assay	<i>S. pneumoniae</i> <i>M. pneumoniae</i> <i>H. influenzae</i> <i>C. pneumoniae</i> <i>B. pertussis</i> <i>L. pneumophila</i>
	2019-nCoV PCR Assay 	2019-nCoV (N gene) 2019-nCoV (ORF1ab gene)
	Tuberculosis	MTB/RIF <i>M. tuberculosis</i> rpoB
Gastrointestinal Infection	GI-Virus PCR Assay	Norovirus GI <i>Adenovirus</i> Norovirus GII <i>Astrovirus</i> Rotavirus <i>Sapovirus</i>
	GI-Bacteria PCR Assay	Shigella/EIEC <i>Vibrio parahaemolyticus</i> <i>Y. enterocolitica</i> <i>Salmonella</i> <i>C. jejuni</i> <i>E. coli</i> O157
	C. difficile PCR Assay	<i>C. difficile</i>
	Sexually Transmitted Diseases	STD PCR Assay <i>C. trachomatis</i> <i>M. hominis</i> <i>N. gonorrhoeae</i> <i>U. urealyticum</i> <i>M. genitalium</i> <i>U. parvum</i> <i>T. vaginalis</i>

Fully Automated Pathology Staining System



WORK PROCESS



Technical Parameter

Item	Parameter
Instrument model	PA-3600
Appearance	Desktop
Function	Fully automated baking, dewaxing, antigen retrieval, staining and counter staining process.
Scope of application	IHC, ISH, CISH, FISH, Dual ICC
Slide capacity	36
Reagent capacity	40
Running time / round	< 3.5h
Temperature range	Room temperature - 101°C
Continuous loading	√
Reagent volume	≤ 130μL

Item	Parameter
Reaction kinetics	Wave-like mixing technology
Delayed operation function	√
Separate waste liquid treatment	√
Waste liquid volume	< 2L/round
Weight	135 kg
Size	1050*690*736 mm
Ambient temperature	18°C~30 °C
Rated voltage	100~240 Vac
Input power	900 VA
Frequency	50/60 Hz

Fully Automated Pathology Staining System

Secondary Antibody

Components	Specification
Immunochromogenic Reagent	Test Kits (100 tests)
Sample Release Reagent	Test Kits (100 tests)
Retrieval Solution pH9.0 Retrieval Solution pH9.0	Test Kits (100 tests)
Bluing Reagent	Test Kits (100 tests)
Enhancer(Linker)	Test Kits (100 tests)
Wash Buffer	1L (400 tests)

Primary Antibody

Catalog No.	Primary Antibody
WB05	Actin
WD47	Arginase1
WB10	ATRX
WB13	bcl-2
WB14	bcl-6
WB16	Beta-catenin
WB26	CAIX9
WB28	Caldesmon
WB29	Calponin
WB30	Calretinin
WB32	CD10
WB33	CD123
WB34	CD138
WB38	CD163
WB39	CD16
WB41	CD1a
WB42	CD21
WB44	CD23
WB47	CD2
WB48	CD30
WB50	CD34
WB51	CD35
WB52	CD38
WB53	CD3
WB57	CD45R
WB58	CD45
WB59	CD4
WB60	CD56
WB62	CD5
WB63	CD61
WB65	CD68
WB66	CD71
WB68	CD79a
WB69	CD7
WB70	CD8
WB72	CDX-2
WB73	CEA
WB74	Chromogranin
WB75	C-MET
WB80	Desmin
WB81	DOG1
WB82	E-Cadherin
WB85	Ep-CAM
WD50	ERG
WB89	EZH2
WB97	Galectin-3

Catalog No.	Primary Antibody
WB98	Gastrin
WC01	GCDFP-15
WC03	GLUT-1
WC06	Glypican 3
WC11	HLA-DR
WC12	HMB-45
WC20	IgG4
WC24	Inhibin, alpha
WC25	Insulin
WC27	Ki-67
WC31	Langerin
WC32	LEF-1
WC38	Mammaglobin
WC39	MART-1/melan A
WC40	MCT
WC43	MLH1
WC46	MSH2
WC47	MSH6
WC48	MUC-1
WC49	MUC2
WC50	MUC5AC
WC51	MUC6
WC52	MUM1
WC56	Myoglobin
WC57	Napsin A
WC63	NSE
WC67	Oligo-2
WC68	p120
WC69	p16
WC72	p40
WC73	p53
WC74	p57
WC75	p63
WC77	Pax5
WC78	Pax-8
WC80	PLAP
WC81	PMS2
WC85	pS2
WC86	PSAP
WC87	PSA
WC88	PSMA
WC91	Rb Gene Protein
WC94	S100P
WC95	S100
WD53	SATB2
WC97	SDHB

Primary Antibody

Catalog No.	Primary Antibody
WC99	SMA
WD01	Smm
WD02	Somatostatin
WD06	Synaptophysin
WD93	TACSTD2
WD13	TIA-1
WD15	TOP2A
WD16	TPO
WD17	Tyrosinase
WD20	Villin
WD21	Vimentin
WD22	WT1
WD23	ZAP-70
WD24	β-tubulin-III
WD26	TTF-1
WD27	GFAP
WD91	TRK
WD31	CK pan
WD33	CK14
WD34	CK17
WD35	CK18
WD36	CK19
WD37	CK20
WD38	CK5&6
WD59	CK5
WD39	CK7
WD41	CK8
WD42	CAM5.2
WD43	CK34βE-HWM
WD92	Cellular tight junction proteins 18.2
WD94	Folate receptor α
WC15	Human Growth Hormone
WC53	Myelin Basic Protein
WB07	AFP
WB08	AMACR/p504s
WD60	AR
WB15	Ber-EP4
WD49	BOB1
WB18	BRAF
WB23	C4d
WB27	Calcitonin
WB31	CD105
WB40	CD19
WB43	CD22
WB49	CD31
WB55	CD44

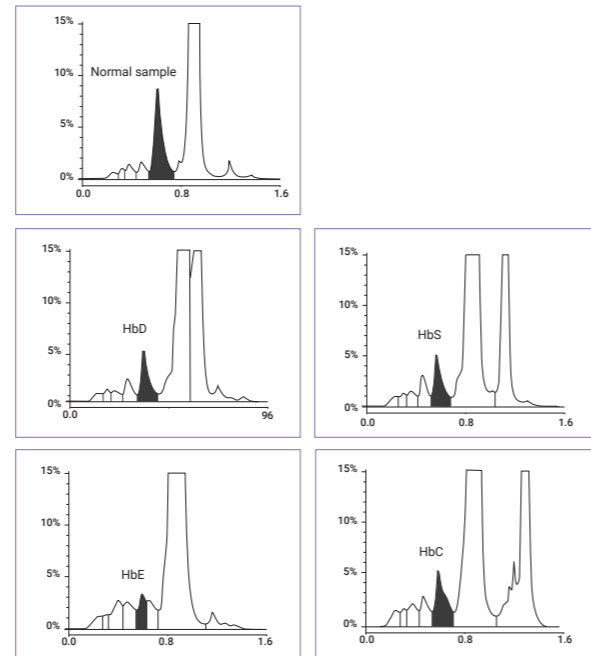
Catalog No.	Primary Antibody
WB71	CD99
WD30	CK-HWM
WB79	D2-40
WB83	EGFR
WB90	Factor VIII
WB91	Fascin
WB93	FLI1
WB99	GATA3
WC02	Glucagon
WC07	Granzyme B
WC04	GS
WD61	HBsAg
WC14	HCG
WC09	Hepatocyte
WC16	HPL
WC19	IgD
WC23	IMP3
WC29	Lambda
WC34	LRP
WC36	Lysozyme
WC54	Myeloperoxidase
WC55	Myo D1
WC58	Nestin
WC59	NeuN
WC60	Neurofilament
WC64	Oct2
WC66	Oct4
WC79	PCNA
WC84	PGP9.5
WC83	PRL
WC90	PTH
WD54	SOX-10
WD04	SOX-2
-	SSTR2
WF13	STAT6
WD07	TAG-72
WD08	TdT
WD12	THY
WD52	PD-1
WD40	CK8 & 18
WF20	HP

HPLC Hemoglobin Analyzer

Gold Standard | Design For Diabetes Diagnosis



Truth-H80E



High Efficiency

- Test speed: 60s/test
- Independent emergency position, can add sample at any time
- Consumables are managed with RFID cards to avoid reagent errors

Innovative Function

- Patented automatic exhaust system reduces instrument failure rate
- Side-hole needle ensures accurate sampling
- Chromatographic column can be replaced easily

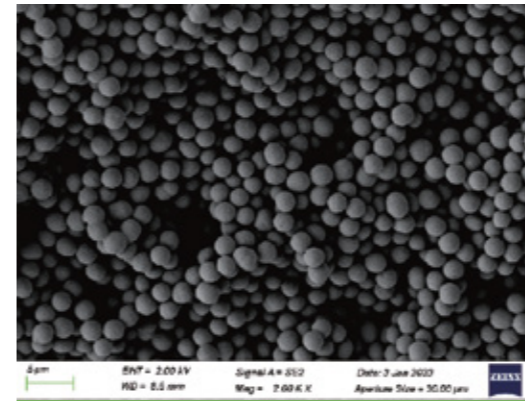
Reliable Result

- Be able to identify the most common glycosylated hemoglobin variants
- Report IFCC and NGSP results simultaneously
- Accurately report HbA1c results if there are abnormal hemoglobin samples

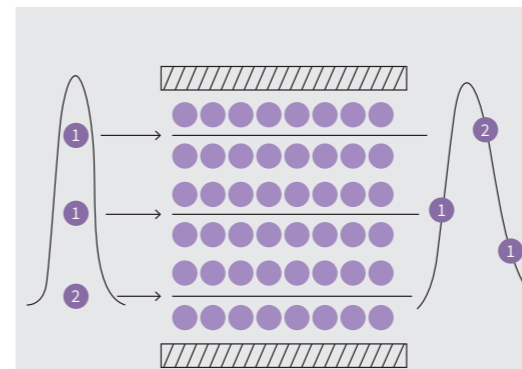
Intelligent Design

- Automatic calibration and control process
- Highly polished steel probes minimize carry-over
- Automatically identify sample types and support bidirectional LIS system

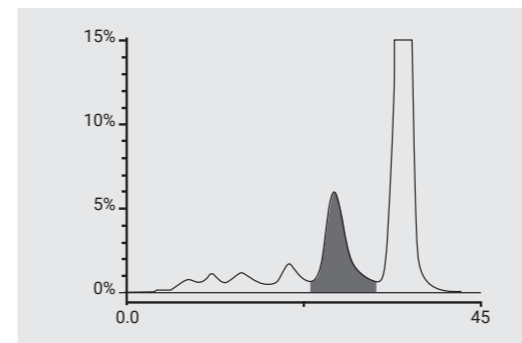
High-efficiency Chromatographic Column



High-density gel improves column efficiency and resolution, ensuring more accurate results

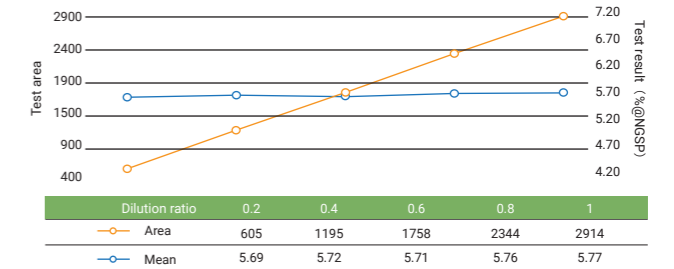


Patented gel filling technique extends the lifespan of the chromatographic column

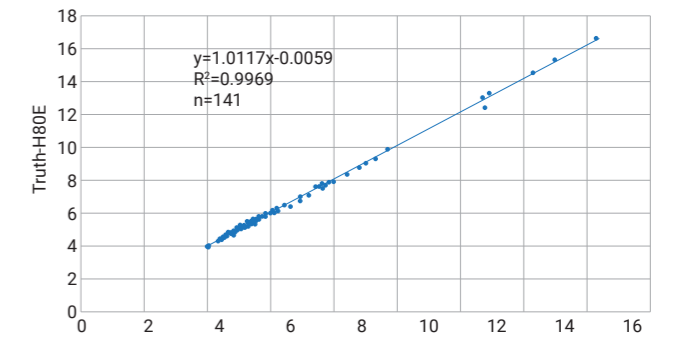


Results are demonstrated by sharp peaks and high resolution

High-precision Result



Result is accurate and stable, not affected by the dilution ratio and sample sedimentation



Excellent correlation with mainstream models

No.	Low value	Middle value	High value
1	6.00	8.57	11.44
2	5.97	8.51	11.39
3	5.94	8.57	11.47
4	5.97	8.53	11.34
5	5.97	8.64	11.57
6	5.96	8.62	11.49
7	5.94	8.6	11.51
8	5.97	8.68	11.46
9	5.97	8.56	11.49
10	6.04	8.54	11.44
11	5.96	8.56	11.43
12	6.00	8.62	11.45
13	5.97	8.6	11.47
14	6.00	8.59	11.47
15	6.00	8.53	11.44
16	5.92	8.62	11.46
17	6.02	8.62	11.44
18	6.00	8.53	11.41
19	5.97	8.59	11.43
20	5.97	8.63	11.5
Mean	5.977	8.5855	11.455
CV	0.48%	0.52%	0.42%

Extraordinary Repeatability

Specification

Analysis principle	High performance liquid chromatography (HPLC)
Detection speed	60s/test
Sample position	51 (50 automatic sample positions, 1 emergency position)
Injection method	Orbital injection, bidirectional LIS automatically identifies sample types
QC calibration	Dedicated quality control and calibration rack, automatic quality control and calibration
Elution method	Ternary gradient elution
Separation component	7 (FP, A1A.A1B, F, LA1C+, SA1C, A0)
Sample type	Whole blood/Hemolysis
Sample container	Support vacuum blood collection tubes, micro cups, biochemical cups
Sampling method	Original tube puncture
Linear range	3%-19%
Repeatability	CV<2%
Consumables management	RFID management mode, multiple reagent combinations can be replaced with one click
Result report	Built-in thermal printer, can print graphic result Report IFCC and NGSP result at the same time
Operation interface	10.4 inches touch screen
Software system	Android system
Dimension	691(L) mm X 555(W) mm X 560(H) mm
Weight	55 kg

Vision

Make biotechnology benefit all

Mission

Racing for life

Core Values

We strive to achieve our goals with passion to meet every customer's needs.

We respect every employee and provide opportunities for continuous self-improvement.

We dare to dream and take action to bring success to every partner.

We pursue excellence to safeguard everyone's health.



WONDFO MASCOT – FOFO

Where there is a whale, there is a way.