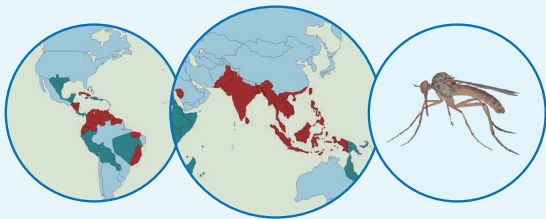


# DENGUE

Combined Diagnostic Kit for  
DengueNS1 Antigen and IgG/IgM Antibody (Colloidal Gold)



Dengue fever, also known as breakbone fever, is a mosquito-borne tropical disease caused by the dengue virus. Symptoms include fever, headache, muscle and joint pains, and a characteristic skin rash that is similar to measles.

## FEATURE

Accuracy, visual result, simple and safe to use

## SPECIMEN

Whole Blood/Serum/Plasma

## REACTION TIME

15~20 mins

## STORAGE TEMPERATURE

4~30°C

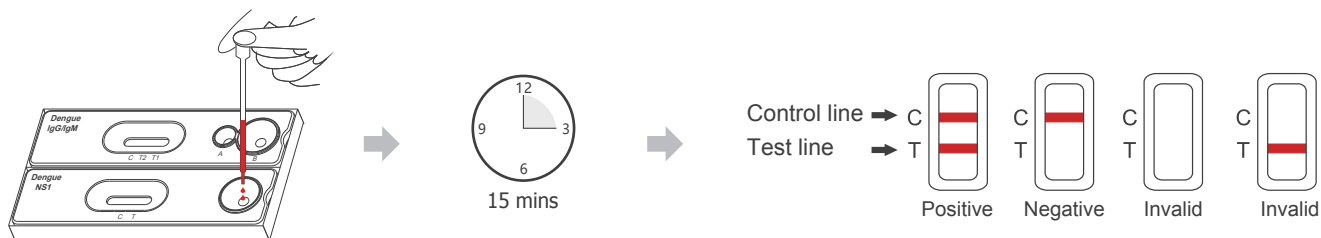
## SHELF LIFE

24 months

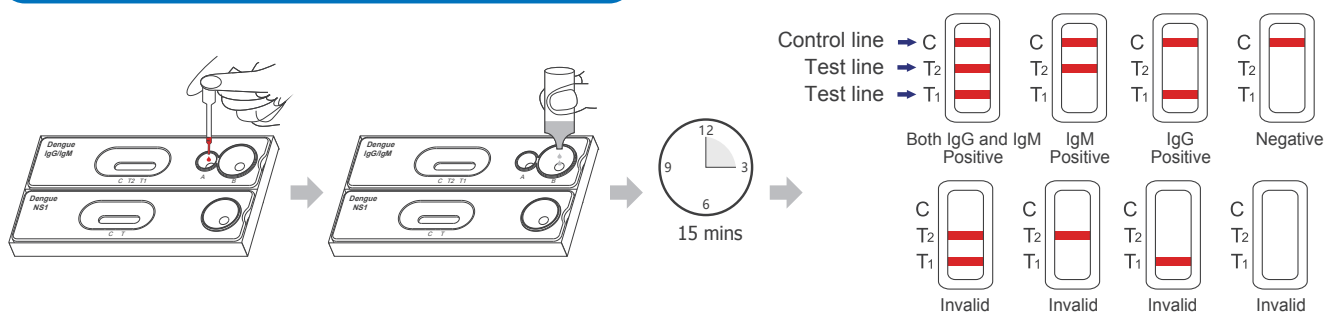


## TEST PROCEDURE

### For Dengue NS1 Antigen test (15~20mins)



### For Dengue IgG/IgM Antibody Test (15~20mins)



## EXCELLENT CLINICAL COMPARISON RESULT

Items	Sensitivity	Specificity
a. Wondfo Dengue NS1 Antigen Test	92.22%	100%
b. Wondfo Dengue IgG/IgM Antibody Test	97.30%	98.18%

## ORDER INFORMATION

Item Code	Description	Pack size	Qualification
W041-C	One Step Dengue NS1 Antigen Whole Blood/Serum/Plasma Test	25 Tests/kit	CE
W041P0007	One Step Dengue NS1 Antigen Whole Blood/Serum/Plasma Test	40 Tests/kit	CE
W109-C	One Step Dengue IgG/IgM Whole Blood/Serum/Plasma Test	25 Tests/kit	CE
W109P0010	One Step Dengue IgG/IgM Whole Blood/Serum/Plasma Test	40 Tests/kit	CE
W111-C	Combined Diagnostic Kit for Dengue NS1 Antigen and IgG/IgM Antibody (Colloidal Gold)	25 Tests/kit	CE
W111P0005	Combined Diagnostic Kit for Dengue NS1 Antigen and IgG/IgM Antibody (Colloidal Gold)	40 Tests/kit	CE

