

WONDFO BIOTECH  
WeAreWorkingForYour **Health**

**Wondfo**

Guangzhou Wondfo Biotech Co., Ltd.  
No. 8 Lizhishan Road, Science City,  
Luogang District, 510663 Guangzhou, P.R.China  
Tel: (+86) 400-830-8768  
Website: en.wondfo.com.cn  
E-mail: sales@wondfo.com.cn



Rev. A1 Rel.: 2021/12/13

Wondfo reserves all rights. All contents of this brochure are copyrighted by Wondfo.



**$\beta$ -hCG**

**Finecare™**

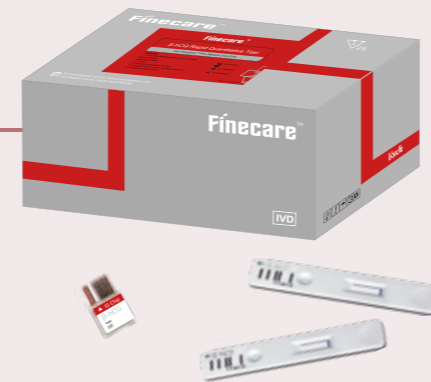
**$\beta$ -hCG Rapid Quantitative Test**

✓ Instrument detection,  
automatic display of quantitative results

# Fineware™

## β-hCG Rapid Quantitative Test

- ✓ High specificity for different pregnancy states
- ✓ Help diagnosing pregnancy at early stage
- ✓ Quantitative results, dynamic monitoring
- ✓ Wide testing range: 2-200,000 mIU/mL
- ✓ Room temperature storage up to 24 months



### CLINICAL APPLICATION

- Assist in confirming pregnancy
- Monitoring pregnancy
- Helping identify an ectopic pregnancy
- Monitoring a woman after a miscarriage

### DEPARTMENTS



Point of Care  
(GP, Doctor's Office, Clinics)



Laboratory



Reproductive  
medical center

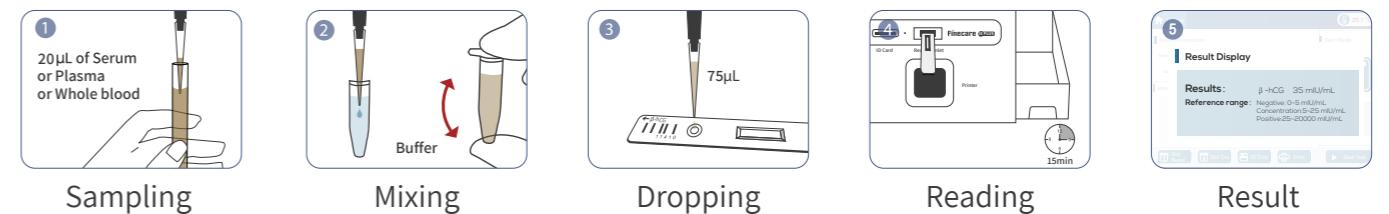


Gynecology & Obstetrics

### ITEMS SPECIFICATION

Item	Catalog No.	Sample Type	Sample Volume	Loading Volume	Reaction Time	Detection Range	Storage
β-hCG	W225	Whole blood/ Serum/Plasma	20 μL	75 μL	15 minutes	2-200,000 mIU/mL	4-30°C for 24 months

### TEST PROCEDURE



### ADAPTATION INSTRUMENTS

1. Fineware™ FIA Meter Plus (FS-113)
2. Fineware™ II Plus SE (FS-114)
3. Fineware™ III Plus (FS-205)

